



IN PRE VALIDATION CONSULTATION

# East Lammernuir Local Place Plan 2024-2034

East Lammernuir Community Council

May 2024



The report has been prepared on behalf of the East Lammermuir Community Council

by Sarah McLeary of Smith Scott Mullan Associates.

s.mcleary@smith-scott-mullan.co.uk

**Thanks to financial support from**

*Fred Olsen Renewables*

*EDF Energy*

*East Coast Grid Services Ltd*

*SSE*

*SPEN*

*ABEI*

*RES*

*Island Green UK*

# Glossary

LPP - Local Place Plan; a community-led plan written by a constituted group and registered with the local authority.

ELCC - East Lammermuir Community Council; a voluntary organisation set up by statute by the Local Authority and run by elected local residents to act on behalf of its area.

ELC - East Lothian Council; the local authority of elected members and officers with a statutory responsibility to govern the public resources in East Lothian

LDP - Local Development Plan; East Lothian Council's document setting out the planning strategy and policies to guide the future development of East Lothian.

DELAP - Dunbar & East Linton Area Partnership; the local voice of community planning, each has a delegated budget from East Lothian Council to deliver improvements in their area.

Energy Infrastructure - Windfarms (on- and off-shore), sub stations, cable runs, converter stations, battery storage farms, solar farms.

Energy Developers - private companies undertaking decarbonisation of the grid through renewable infrastructure work.

ELWOC - East Lothian Winds of Change; local group set up to challenge the development of large-scale electrical infrastructure in East Lothian.

AELCCB - Association of East Lothian Community Councils Benefits.

ELHSCP - East Lothian Health & Social Care Partnership.

# CONTENTS

3 Foreword from the Chair

4 **Introduction**

5 Our East Lammermuir

6 Why Now?

**Getting Ready**

7 Defining the Community

10 What is a Local Place Plan?

**Planning Policy**

11 National Planning Policy

12 East Lothian Planning Policy

13 A Wider Picture

14 Listening to East Lammermuir

**Just Transition**

15 Managing Change in the Just Transition

**18 The Three Strands**

19 Getting Around

21 Our Places

23 The Land

**25 Detailed Action Plans**

26 The Just Transition

27 Getting Around

31 Crossing the A1

33 Our Places

39 The Land

# Foreword from the Chair

Welcome to the first East Lammermuir Local Place Plan.

East Lothian's Community Councils exist to ascertain, co-ordinate and express the views of the local community they represent, and to take action in the interests of that community.

The process of gathering views and promoting conversations - some of them heated! - about what we want East Lammermuir to be like has given the community council its best ever understanding of people's aspirations for this area. I hope you enjoy reading all about this, and seeing the various visions of the future we are putting forward.

Now we need to make this happen - please join us and help in whatever way you can. If you spot an action you can help with, please get in touch via [info@elcc.scot](mailto:info@elcc.scot)

**Chris Bruce**

**Chair**

**East Lammermuir Community Council**

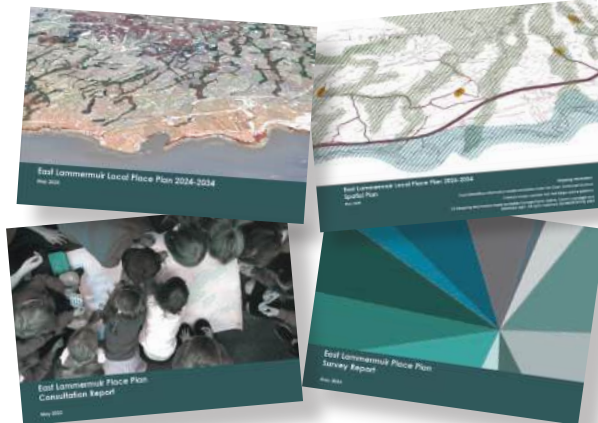
# How to read this document

The East Lammermuir Local Place Plan 2024-2034 is for everyone in the community, Energy Developers, and others who are looking to work in East Lammermuir.

This document is part of a suite of documents which can be read in full or in part.

**This report** contains an overview of the priorities of the community, and a detailed plan outlining how those priorities can be met.

**East Lammermuir Local Place Plan 2024-2034 Spatial Plan - Maps showing place-based actions**

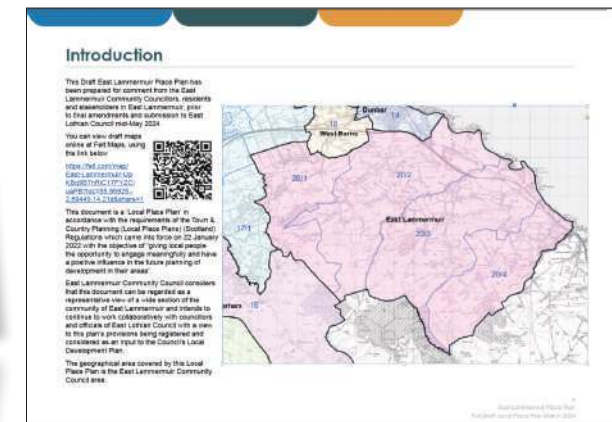


**Consultation Report** - details of all community consultation which has informed this Local Place Plan.

**Survey Report** - full anonymised analysis of the online and paper survey

Together these documents form the evidence base for this Local Place Plan.

The tabs along the top of each page lets you know which section you are reading.



**For East Lothian Council Planning Department** - the Local Place Plan contains a number of actions and aspirations that are not deliverable through the Planning system.

Actions have been labelled with a star where they should be taken into account in the Local Development Plan. ★

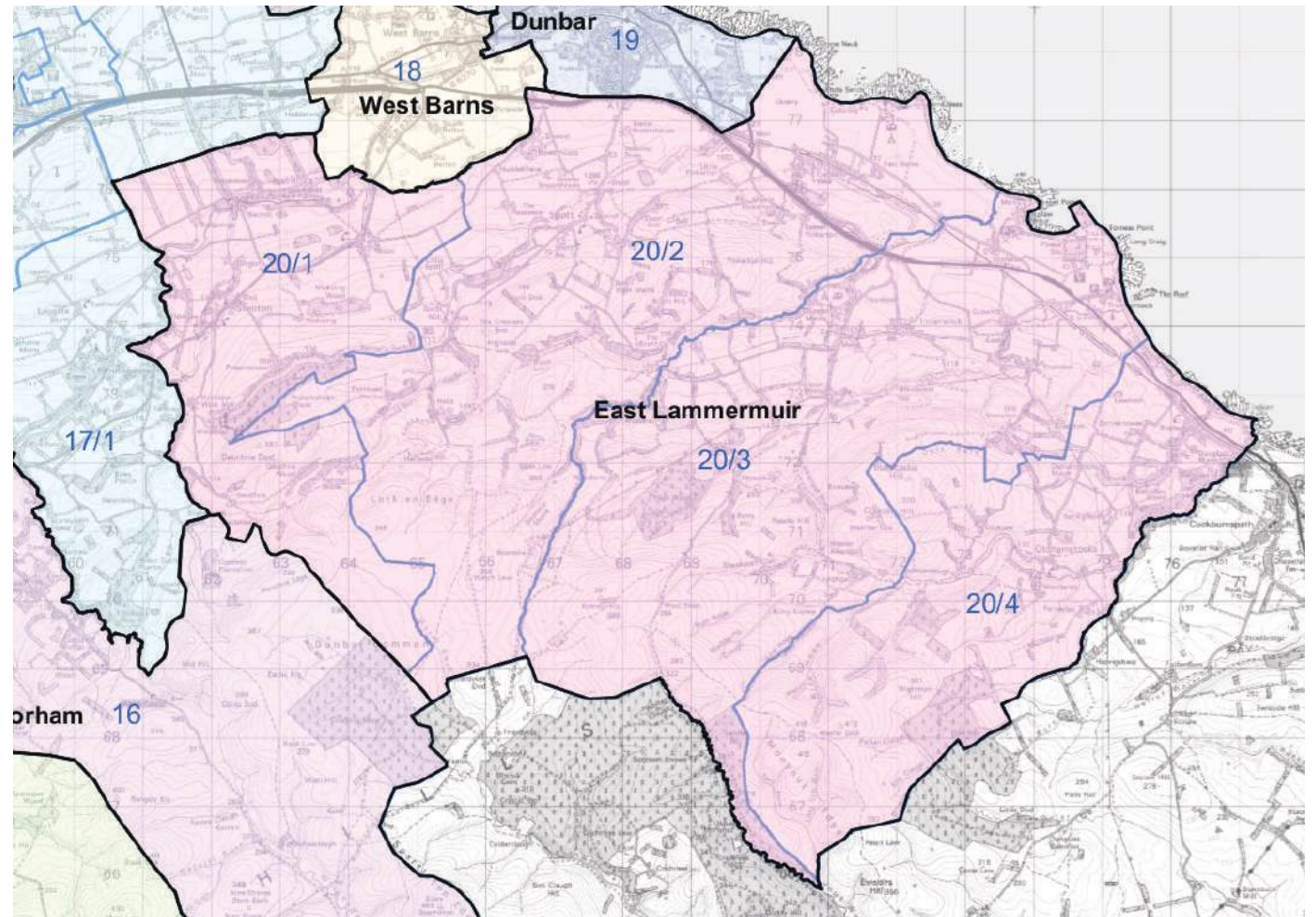
# Introduction

The East Lammermuir Local Place Plan has been prepared on behalf of the East Lammermuir Community Councillors, residents and stakeholders in East Lammermuir, for submission to East Lothian Council in May 2024.

This document is a 'Local Place Plan' in accordance with the requirements of the Town & Country Planning (Local Place Plans) (Scotland) Regulations which came into force on 22 January 2022 with the objective of "giving local people the opportunity to engage meaningfully and have a positive influence in the future planning of development in their areas".

East Lammermuir Community Council considers that this document can be regarded as a representative view of a wide section of the community of East Lammermuir and intends to continue to work collaboratively with councillors and officials of East Lothian Council with a view to this plan's provisions being registered and considered as an input to the Council's Local Development Plan.

The geographical area covered by this Local Place Plan is the East Lammermuir Community Council area, shown on the adjacent map in pink.





# Our East Lammernmuir

This Local Place Plan is founded on and driven by the concerns, dreams and aspirations of the community.

## Knowledge

The people of East Lammernmuir have a collective wealth of knowledge of the history, landscape, and needs of the community.

We thank those who have contributed their time, energy and careful thought to the process of creating this plan.

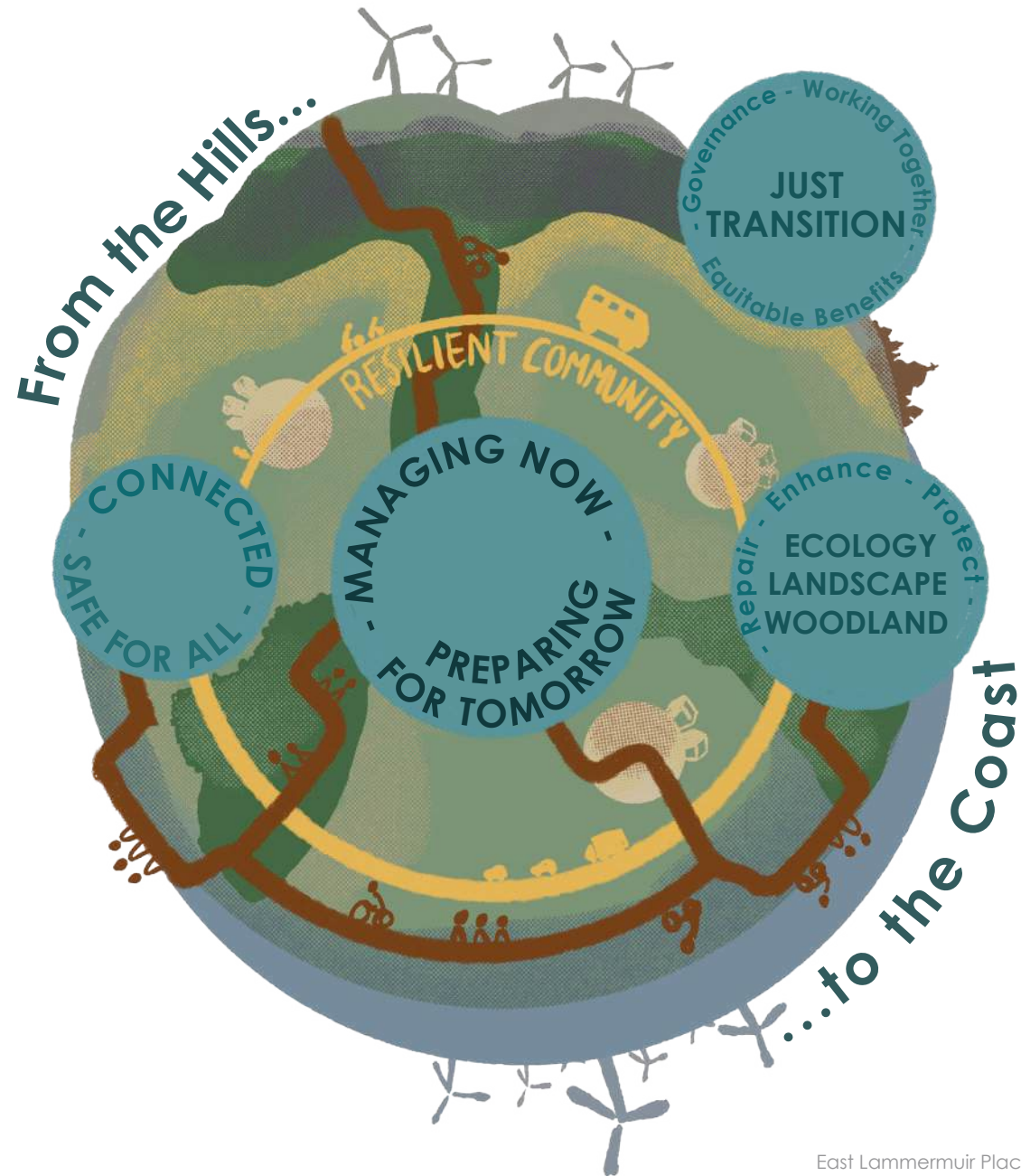
## Ambition

While heritage and history is valued, we understand and embrace a just transition to a net zero future, with support given first to those who need it most.

This plan is part of an ongoing process of constant change and improvement, and refers to some of the inspiring community projects in the area.

## Love

We love our community, landscape and the places we live and work.



# Local Place Plan - Why Now?

The East Lammermuir area is the scene of multiple major Energy Infrastructure projects, with varying programmes and timescales. Some planning applications are live, with others in the pre-application process. These projects bring disruption and change to the area.

The Community Council is using the consultation responses and the LPP process to inform ongoing discussions with stakeholders in the Energy Infrastructure projects.

The community is concerned about the cumulative effect of the projects.

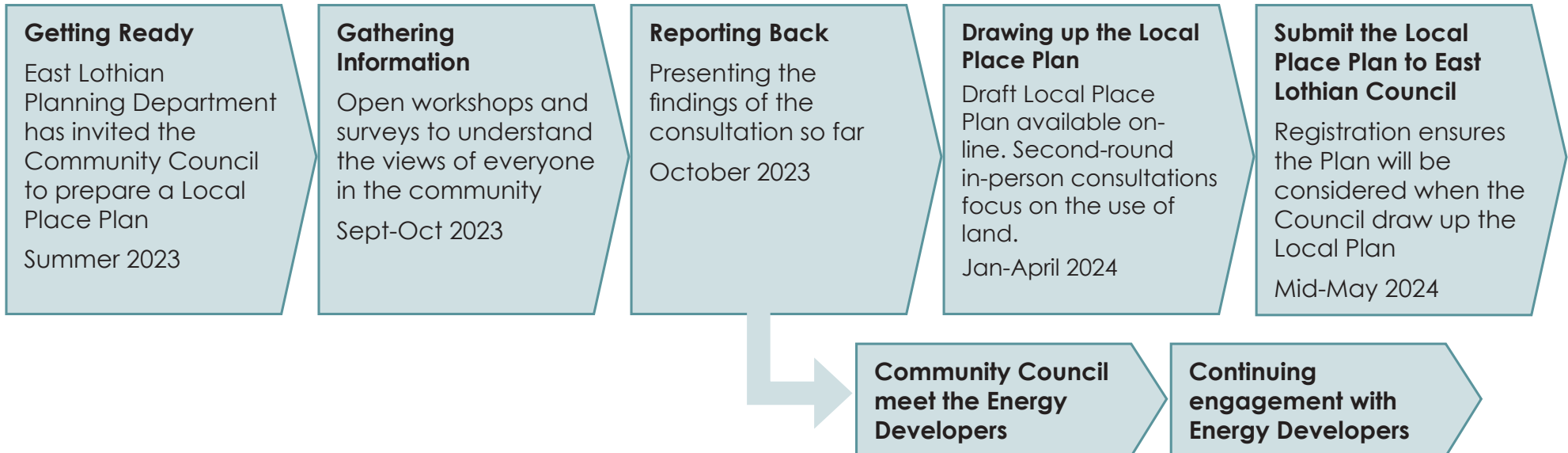
The list of projects includes, but is not limited to;

- Proposed Branxton Substation - Scottish Power Energy Networks
- Eastern Link - Scottish Power Energy Networks
- Berwick Bank windfarm and connections
- Crystal Rig IV and Solar Farm – Fred Olsen Renewables
- Several BESS Battery Storage facilities
- Torness Decommissioning - EDF
- Newlands Windfarm (outside East Lammermuir)
- Wind turbine repowering by Fred Olsen Renewables
- In addition, Valencia run the substantial landfill site at Oxwellmains

This purpose of this plan include;

- To be taken into account during the drawing up of the East Lothian Local Development Plan.
- To guide decision-making, public services and investment.
- To inform our own community decision-making, resourcing, and action.
- To communicate to the community the collective breadth of ambition, including projects already underway.
- To support funding bids for actions within the plan, including shaping a community benefits regime for green energy developments.
- Providing wide evidence base from the community to inform ongoing engagement with Energy Developers as proposals continue to emerge.

## Process Timeline



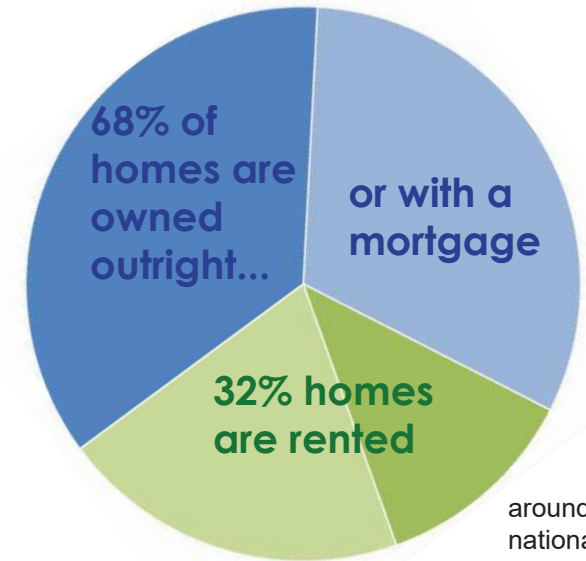
IN PRE VALIDATION CONSULTATION

# Defining the Community - Key Metrics

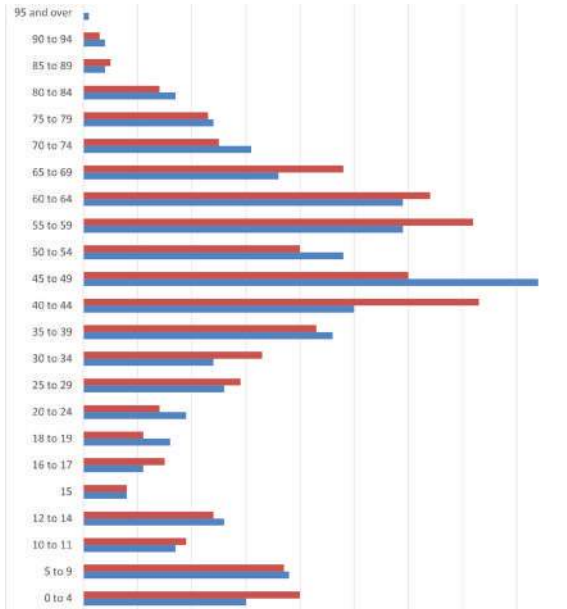
East Lammernmuir has around 1400 residents...  
... in 590 households



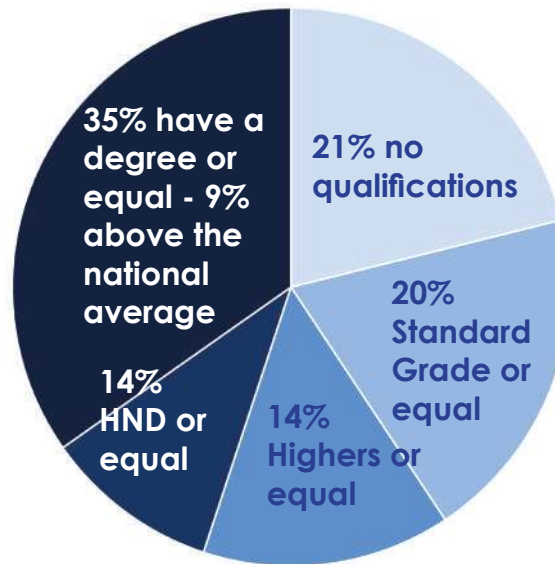
93% of households have access to a car/van - against the national average of 69%



Age by Gender



Education level



96% of residents born in the UK, of which 77% of residents born in Scotland, around the national average

2011 census information



# Defining the Community

The East Lammermuir Community Council area is around 11 miles east-west and 7 miles north-south, comprising largely rural agricultural land, woodlands, and a section of the Lammermuir hills.

A large section of the coastline is designated as a Site of Special Scientific Interest.

In terms of amenities, there is one small shop at Thurston Caravan Park, no larger shops, medical centres or pubs.

Dunbar, East Linton, Eyemouth and Haddington are the nearest larger towns, which provide shopping and leisure attractions, as well as health services.

The community is widely dispersed. East Lammermuir area contains around 600 dwellings, concentrated around four villages of Stenton, Spott, Innerwick and Oldhamstocks. Other settlements include Pitcox, Crowhill and Skateraw.





# Defining the Community

**East Lammermuir Community Council** are driving the Local Place Plan. The group has members from all four villages, and rotates their open meetings around the four village halls.

The Community Council is a voluntary organisation set up by statute by the Local Authority and run by elected local residents to act on behalf of its area. As the most local tier of elected representation, the Community Council plays an important role in local democracy.

East Lammermuir Community Council is a constituted body, eligible under Planning Regulations to submit this Local Place Plan.

<https://eastlammermuircommunitycouncil.org.uk/>

There are 20 Community Councils in East Lothian. Led by volunteers, each is charged with ascertaining the views of local residents and representing those views to East Lothian Council.

East Lammermuir Community Council covers the more rural areas of the Dunbar and East Linton Ward of East Lothian Council, in particular the villages of Innerwick, Oldhamstocks, Spott and Stenton.

Meetings – every 6-8 weeks – are held in rotation in the village halls of Innerwick, Spott, Stenton and Oldhamstocks.

The community is active and engaged. Groups include;

## **Innerwick Parish Welfare Association SCIO**

Serving the community of Innerwick and manages Innerwick Village Hall.

<http://www.ipwa.scot/>

## **Oldhamstocks Community Association SCIO**

Serving the community of Oldhamstocks parish and manages Oldhamstocks Village Hall.

<https://oldhamstocks.org.uk/>

## **Spott Community Association**

Serving the community of Spott and manages Spott Village Hall.

<https://spottvillage.org.uk/>

## **Stenton Community Association SCIO**

Serving the community of Stenton and manages Stenton Village Hall.

<https://www.stentonhall.com/>

## **East Lothian Winds of Change**

Set up to challenge the incoherent development of large-scale electrical infrastructure in East Lothian.

<https://www.facebook.com/EastLothianWindsOfChange>



**INNERWICK  
VILLAGE HALL**



**SPOTT  
VILLAGE HALL**



**OLHAMSTOCKS  
VILLAGE HALL**



**STENTON  
VILLAGE HALL**

# What is a Local Place Plan?

East Lothian Council have invited East Lammermuir Community Council to prepare a Local Place Plan [LPP].

Local Place Plans were introduced by the Planning (Scotland) Act 2019, Section 14 of which contains a new right for communities to produce Local Place Plans as part of the Scottish planning system.

Local Place Plans contain the community's proposals for the development and use of land, and so provide a new opportunity for communities to pro actively feed into the development planning system. Local Place Plans also aim to improve public engagement and involvement in the planning system.

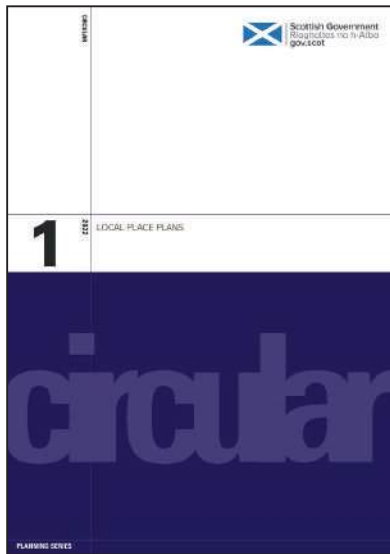
The intention is for this Local Place Plan to be registered with East Lothian Council, and be taken into account in preparing the Council's Local Development Plan.

A Local Place Plan document is written by and for the whole community. The aspirations, priorities and projects are emerging subsequent to engagement with the people who live and work in East Lammermuir.

The LPP is solution- focussed and includes an action plan, which directly relates to the issues and dreams of the community.

The LPP is a tool to support the community, and identify pragmatic and deliverable actions.

The Plan includes maps which propose future use of land, as well as cultural actions.



Front cover of Local Place Plan Planning Circular

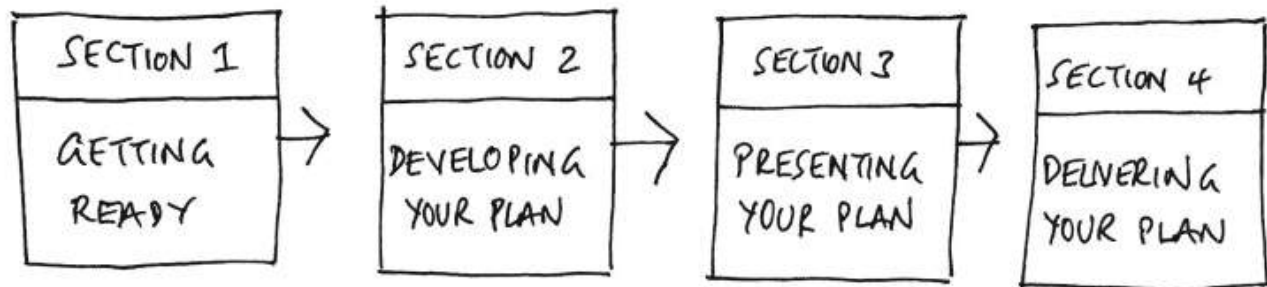


Image from the Local Place Plan Draft How To Guide



# National Planning Policy

The Local Place Plan has regard to National Planning Policy, particularly the relevant overarching spatial principles;

## Just Transition

Decarbonising the energy grid is a key concern in East Lammermuir, in the context of large scale Energy Infrastructure projects which impact the landscape, roads, wildlife and people of the area. The ongoing process of the net zero transition and it's impact on the area is an overarching theme of this Local Place Plan.

## Conserving and recycling assets

Making productive use of existing buildings and roads is strongly supported by the community. Temporary roads and haul roads created during construction periods should not be removed. We support a circular economy plan for the Energy Infrastructure equipment, such as turbines and batteries.

## Local living

Car ownership is 24% higher than the national average. The community supports sustainable travel, requiring improved infrastructure such as improved digital connectivity, a sustainable bus strategy and path and cycle strategy as laid out in this document.

## Rural revitalisation

Support for rural communities requires management and development of infrastructure and housing.

Retaining the vitality, social and cultural sustainability of rural areas through enabling a variety of people to live and work in a rural setting, is of key importance to the community.

The ideas and actions in this Local Place Plan support a natural and vibrant future for East Lammermuir.

\*Compact urban growth and rebalanced development are less relevant in East Lammermuir.

**Concerns of rural revitalisation have come to the fore; the importance of ensuring the vitality and sustainability of communities, villages and the rural way of life, while protecting landscape and heritage are key to the community's vision of the future.**

### **NATIONAL PLANNING FRAMEWORK 4;**

#### **CROSS-CUTTING OUTCOME AND POLICY LINKS: RURAL REVITALISATION**

*Our strategy and policies support development that helps to retain and increase the population of rural areas of Scotland.*

*The spatial strategy reflects a wide range of proposals for development in rural areas, supported by national developments that recognise the potential and need to expand key sectors including renewable energy, sustainable transport and green infrastructure.*

*Policy 17 promotes the development of rural homes, to ensure the needs of communities are met in a sustainable way. Similarly, Policy 29 encourages development that will contribute to rural economies and communities. Development proposals that contribute to the viability, sustainability and diversity of rural businesses are supported while ensuring planning policies take into consideration local characteristics. Both policies support development in previously inhabited areas in a way that is guided by LDPs. Greater constraint will be applied in areas of pressure whilst in rural areas with fragile communities, a more enabling approach has been taken to support communities to be sustainable and thrive. LDPs are required to set out an appropriate approach to development in areas of pressure and decline informed by an understanding of population change and settlement characteristics and how these have changed over time as well as an understanding of the local circumstances including housing and travel.*

*Many policies will also play an important role in supporting rural communities and population growth. Some focus on supporting sustainable development in key sectors for rural areas such as Policy 30 on tourism, which aims to ensure community, environmental and business considerations are fully taken into account. Policy 32 encourages sustainable aquaculture, whilst Policy 10 supports development in coastal areas that takes into account future vulnerability to climate change. Policy 11 supports opportunities for renewable energy development whilst Policy 24 will support the delivery of digital infrastructure to support investment and population growth in rural areas.*

*Care has been taken to ensure policies reflect the specific needs and constraints of rural areas. Policy 13 ensures that in assessing the transport impacts of development, the area's needs and characteristics are taken into account. Policy 15 aims to promote local living in broad terms, including through 20 minute neighbourhoods where practical, recognising varying settlement patterns and the particular characteristics and challenges of different areas in applying these principles in practice. Policy 28 also recognises the importance of retail facilities for rural communities and economies.*

# East Lothian Planning Policy

The Local Place Plan has regard to East Lothian Local Development Plan 2018, both the written policy and the spatial plans.

While the detailed actions on the spatial maps refer to specific policy, the adjacent objectives and policy are relevant for the wider East Lothian area.

**Development Plan Vision**

*“By 2032, the Edinburgh City Region is a healthier, more prosperous and sustainable place which continues to be internationally recognised as an outstanding area in which to live, work and do business.”*

**Objectives & Outcomes**

- *Promote sustainable development*
- *Help grow the economy, increase housing supply and reduce inequalities*
- *Protect and enhance the area’s high quality environment and its special identity*
- *Ensure adequate infrastructure capacity and an appropriate use of resources*

**PROP EGT3: Forth Coast Area of Co-ordinated Action**

*The Council supports the principle of electricity grid connections on the Forth coast from Cockenzie to Torness in order to facilitate off-shore energy generation, provided the following criteria are met:*

- *infrastructure is combined wherever possible;*
- *connection to existing infrastructure at Cockenzie and Torness is prioritised; and*
- *proposals must not have an adverse effect on the integrity of the Firth of Forth SPA or any other European site designated under the Habitats Directive either alone or in combination with other projects and plans.*

*Proposals must be accompanied by project specific information to inform an Appropriate Assessment under the Habitats Regulations.*

**Policy DC4: New Build Housing in the Countryside**

*New build housing development will only be supported in the countryside outwith the constrained coast where there is no existing house or no appropriate existing building suitable for conversion to a house is available in the locality and:*

*(i) In the case of a single house, the Council is satisfied that it is a direct operational requirement*

*of a viable agricultural, horticultural, forestry, countryside recreation or other business, leisure or tourism use supported in principle by Policy DC1. The Council will obtain independent advice from an Agricultural and Rural Advisor on whether there is a direct operational requirement for an associated house; or*

*(ii) In the case of other small scale housing proposals, it is for affordable housing and evidence of need is provided, and the registered affordable housing provider will ensure that the dwellings will remain affordable for the longer term. Proposals should be very small scale and form a logical addition to an existing small-scale rural settlement identified by this plan.*

*(iii) The proposal satisfies the terms of Policy NH1.*



# A Wider Picture - Relevant and Emerging Policy

## What does Scottish Government say about the Just Transition?

*Box X – The Scottish Government’s National Just Transition Outcomes [excerpt]*

*Citizens, communities and place: support affected regions by empowering and invigorating communities and strengthening local economies.*

*What is a Just Transition Plan?*

*...Co-designed and co-delivered to ensure all partners are empowered to engage, and that action is fair and co-ordinated. This means placing those most likely to be negatively impacted by the transition at the heart of our process – whether an offshore energy worker seeking re-training opportunities, or a farmer seeking seed capital to invest in sustainable food production. Empowering people to shape their future is essential in maintaining a strong social consensus for change.*

*Box Y – The co-design planning process*

*‘Co-design’ ensures that a wide range of groups can be directly involved in what will inevitably be a more robust and creative process of planning. It will also help ensure that all the Just Transition Plans are underpinned by diversity and inclusion.*

*...*

***Certain regions and certain groups within society will experience the transition to net zero more acutely than others and this disparity will need to be reflected in the level of engagement. This is particularly the case in areas where there are carbon-intensive industries that will be undergoing intensive, often rapid change.\****

*Understanding the barriers such areas face and what mitigation and support can be provided by Government, and others, will be vital to the success of any Just Transition Plan.*



\*formatting author’s own

## What’s happening now?

Wider issues of national importance are being played out in East Lammermuir with regard to transitioning the national energy network to net zero.

Stakeholder consultation regarding Energy Infrastructure has explored issues of procedure, the Ofgem system, and the Energy Consents and Planning systems.

### Energy Infrastructure Consents

*The Energy Consents process controls Energy Infrastructure applications.*

*Any Onshore energy projects with 50MW+ capacity require both planning permission from the local authority for the physical works and consent under Section 36 of the Electricity Act 1989 from the Scottish Ministers to operate the projects and generate electricity.*

*To avoid duplication, the Scottish Ministers can direct that planning permission be deemed to be granted at the same time as a “Section 36 Consent”. In this situation, the Scottish Ministers will have overall control of the application but will closely consult the planning authority on relevant parts of the scheme. ELC are statutory consultees in that process and apply NPF4 policies and all relevant local planning policy and guidance to Energy Consents applications and accompanying reports e.g. Environmental Impact Assessment.*

*The existing LDP1 does not have a policy that specifies land for development of Energy developments and therefore applications are not limited to specific areas, or zoned in the Local Development Plan.*

- wording from ELC Planning Department

At an open meeting in February 2024, co-chaired by Chris Bruce [ELCC] and Keith Dingwall [ELC Planning Department], a representative of the East Lothian Winds of Change group asked the MSPs present;

*‘Many of the electrical infrastructure projects apparently destined for our Community do not follow this Town & Country Planning (Scotland) Act route to Consent, travelling instead via the Electricity Act 1989 route through the Energy Consents Unit (ECU). This is an almost entirely invisible process whereby Consent is sought and in a timescale not known and via decision makers not seen, Consent is generally granted. Do the elected representatives here tonight support the opening up of this process to public scrutiny?’*

MSPs Craig Hoy [Cons], Martin Whitfield [Labour] and Housing Minister Paul McLennan [SNP] agreed to assist with this work to open up the ECU process to scrutiny.

A change to the Council standing orders in early 2024 grants East Lothian Members the opportunity to take the Council’s proposed consultation response to Planning Committee for a determination with respect to Energy Consent applications.

We request ongoing and structured support from our elected officials in local and national office, as well as officers within East Lothian Council and the Scottish Government.

We welcome support from national agencies such as Community Land Scotland and Local Energy Scotland.

We strongly suggest that ELC consider adoption of a policy in LDP2 that specifies land for Energy Developments.

# Listening to East Lammernmuir

The consultation process and detailed findings are recorded in the East Lammernmuir Local Place Plan Consultation Report, and East Lammernmuir Local Place Plan Survey Report.

Working with local community associations, the Community Council and facilitators engaged with people from all areas and backgrounds through face-to-face meetings, online and on paper to find out the concerns and aspirations of the people of East Lammernmuir, from Autumn 2023 to Spring 2024 with a range of methods from online survey to in-person drop in.



**85 people filled in the survey**



**76 people attended at least one of ten in person events across two phases of in-person engagement**



**54 school pupils were consulted**

The emerging Themes from the face-to-face events and questionnaires begin to paint a picture of the East Lammernmuir region, the concerns and priorities of the community.

Most comments relate to the adjacent, overlapping issues, which have been arranged to roughly illustrate the number of comments on each topic.



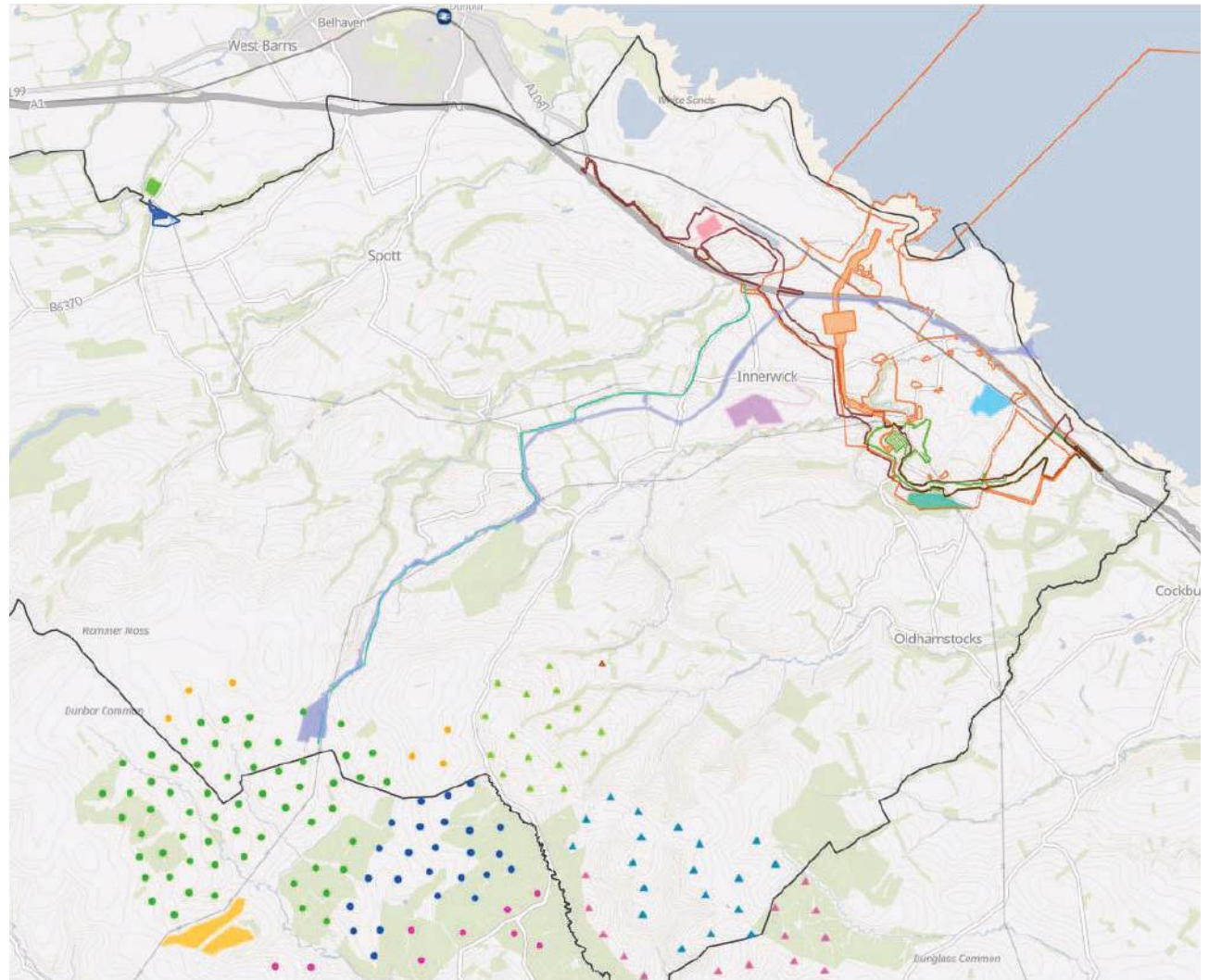


# Managing Change in the Just Transition

## Energy Infrastructure

The map outlines the Energy Developments in pre-planning, planning, and consented.

Map taken from [eastlammermuirdevelopments.co.uk](http://eastlammermuirdevelopments.co.uk), administrated by SSE and Fred Olsen Renewables, accessed March 2024.





# Managing Change in the Just Transition

There is wide support for Renewable Energy and the de carbonisation of the grid.

Large scale change and disruption accompanies the transition.

## THE GOOD NEWS

The Community Council is managing the **ongoing engagement process** with key stakeholders together with representatives from the community groups.

**A structure for the process, and defined roles are emerging from these discussions.** How these roles will be managed and funded is the subject of ongoing discussion between stakeholders.

Community **Traffic and Biodiversity groups** have been set up.

## DEFINING THE CHALLENGE

The perception of an **unfettered and uncontrolled goldrush** around the grid connection,

Deep concern about **disruption to traffic and the environment** during the construction period,

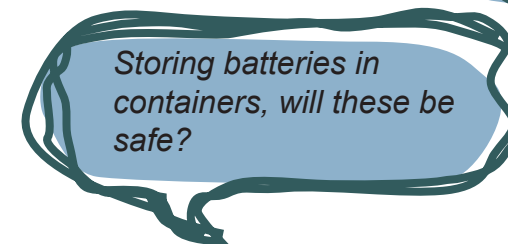
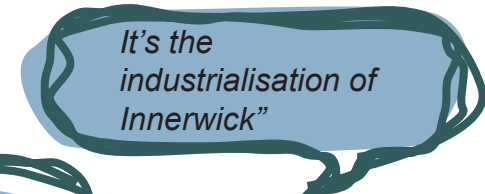
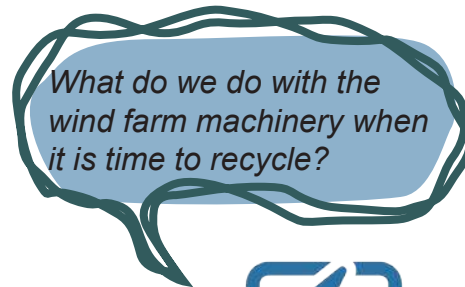
**Poor communication and lack of a collated plan** from the developers and transmission owners

Concerns about **unknown risks and lack of controls** and safety concerns once the infrastructure is in place,

Cumulative **impact on the landscape, ecology, and geology,**

**Lack of a collated programme** of planning applications or works

Other **environmental concerns** which are covered by Environmental Impact Assessments





# Managing Change in the Just Transition

## COMMUNITY PRIORITIES

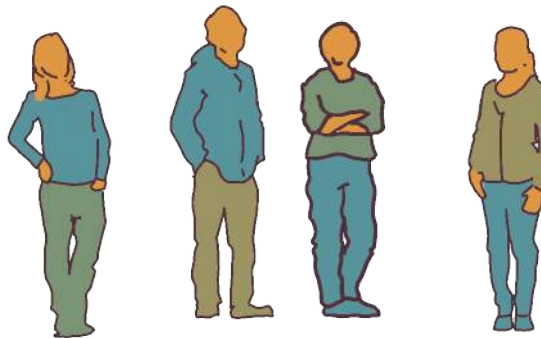
- **Meaningful consultation and joined up approach to developments.**
- **Information about the long term impacts - including how to recycle the infrastructure.**
- **Planning traffic management - with advance communication on many channels, to be agreed with the community**
- **Charter which commits the developers to ongoing, meaningful consultation and information sharing.**
- **Balance between energy infrastructure and environmental impact**
- **Energy companies commit to jobs and opportunities to young people locally**
- **Understanding of the environmental impact on the landscape and coast**

**We can learn from communities in Scotland who have felt this shift.**

From the Scottish Land Trust's report *Beyond Community Benefit – a new deal for thriving communities October 2023*

*'The opportunity is now to ensure that the wealth in this green revolution can be more equitably shared, and we learn the lessons of the oil revolution, where so few communities benefited from Scotland's natural resources.*

*To do this, we need to move beyond thinking that community benefit can be reduced to a single dimension token community payment; we need to move beyond the notion of community benefit to the idea of thriving communities in a partnership model delivering across a range of fronts and characterised by community agency. The Gaelic word sgioba helps capture the spirit; a team of people working together to achieve something worthwhile.'*



*National Planning Framework 4 - Energy;*

*Policy Intent:*

*To encourage, promote and facilitate all forms of renewable energy development onshore and offshore. This includes energy generation, storage, new and replacement transmission and distribution infrastructure and emerging low-carbon and zero emissions technologies including hydrogen and carbon capture utilisation and storage (CCUS).*

*Policy Outcomes:*

- *Expansion of renewable, low-carbon and zero emissions technologies.*

*[See Policy 11]*

*Development proposals for all forms of renewable, low-carbon and zero emissions technologies will be supported.*

*c) Development proposals will only be supported where they maximise net economic impact, including local and community socio-economic benefits such as employment, associated business and supply chain opportunities.*

*d) Development proposals that impact on international or national designations will be assessed in relation to Policy 4.*

*e) In addition, project design and mitigation will demonstrate how [...environmental...] impacts are addressed: ...*

# The Three Strands

**East Lammermuir is a great place to live. We enjoy access to the landscape, the rich ecology and geology of the area, the characterful villages, and the bonds of community and family.**

We value the quiet rural nature of the place, and the rich heritage and landscape.

Our overarching ambition is to increase community resilience, manage change effectively and positively, create stronger connections, and enable people and nature to thrive in the villages and more rural locations.

The concerns and priorities of the community can be loosely grouped into three overlapping strands; Getting Around, Our Places, and The Land.

The action plan has been structured around these strands, although many actions will benefit and address multiple strands.

Please refer to the Survey Report and Consultation Report, which contain greater detail and individual aspirations.

## Strand 1: Getting Around

- **A sustainable transport strategy** to key locations, through and beyond the area, by bus or similar means.
- **A cycling and walking strategy** with safe, direct, well designed paths and cycle routes in a connected network
- **Road and path improvements** to ensure accessibility and safety for all.

## Strand 2: Our Places

- **Schools, Village Halls and Facilities** are the heart of the villages
- **Sustainability and Environmental** aspects of housing and buildings
- **Community Resilience**, combatting isolation and strengthening connections
- **Addressing housing needs**, today and into the future

## Strand 3: The Land

- The value of **Heritage** in our villages and landscape
- **Protecting the unique character** of the landscape
- Enhancing and protecting **ecology and geology**
- Understanding and **managing the change** that major infrastructure brings to the area





## Strand 1: Getting Around

**MAIN GOAL** Reducing reliance on private cars by creating better connections and better quality roads and paths. Making cycling, walking and bus travel an easy, quick, safe and attractive choice.

**REASON** reduce rural isolation, improve equality, accessibility, health and wellbeing.

### THE GOOD NEWS

East Lothian Council have funding to trial a **Pingo style on demand bus service** covering Oldhamstocks and Innerwick to Dunbar, from March 2024.

**The core paths are a great asset** to the community. Recent community improvements to the circular loop around Spott are seen as a great example for others, both the path itself and how the community worked together to achieve their goal.

There is **potential to connect to a wider active travel network** which is being developed in Dunbar and West Barns.

### DEFINING THE CHALLENGE

The **poor bus service** has deteriorated. Many feel isolated themselves, or concerned that others experience isolation.

**Lack of safe walking and cycling routes between villages as well as to Dunbar and the coast.** Most rely on their car and feel they couldn't manage without one.

The nature of the rural roads with poor maintenance, changeable surface treatments, and long straight sections where vehicle speeds can ramp up, contributes to the **perception that cycling on-road is unsafe.**

The **A1 is a major barrier** which is dangerous and difficult to cross. Crossings are needed to gain safe access to the coast, as well as to Dunbar.

*I took the kids across the A1 into Dunbar, it was really scary*

*Spott Road is busier and busier*

*We need decent and affordable public transport*

*The roads are in a poor state of repair and used as a diversion when the A1 is closed*

*Children can't move around safely*



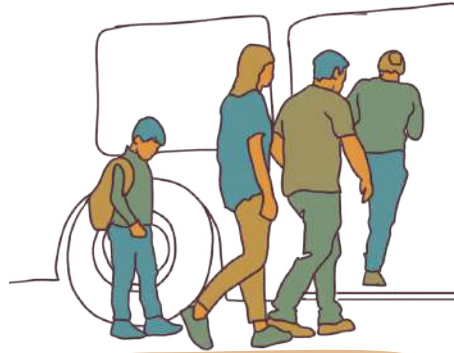
*Representative views from members of the community*



## Strand 1: Getting Around

### PRIORITIES

- **Safe crossing points across the A1** within the East Lammermuir boundary.
- **A sustainable transport strategy** to key locations, through and beyond the area, by bus or similar means. No further deterioration of the bus service, and a new Demand Responsive Transport Pingo -style service should be supported by the community and relevant agencies.
- **A cycling and walking strategy** with safe, direct, well designed and maintained paths and cycle routes in a connected network. There are specific areas which will be shown on the area maps where paths could be created or enhanced. This can be supplemented with new paths on the alignment of construction haul roads, to improve access to the coast.
- **Road and path improvements** to ensure accessibility and safety for all, in a rolling programme throughout the area.



*Lets put the walkers first.*

*More refuges on the side of narrow local roads - especially on 253 bus route and on the road down from Innerwick. This would also help dog walkers.*

*Segregated paths next to at least some of the roads.*



*It would be great to see a safe cycle and walking path from Stenton to connect into the Dunbar and East Linton cycle network.*

*Joined up cycle path as it seems to jump from one side off A1 to other and in some places just stops!*

*Grants for electric bicycles would be great*



*Representative views from members of the community*



## Strand 2: Our Places

**MAIN GOAL** Support and enhance the places we live, celebrate the unique character of East Lammermuir's heritage, Identify opportunities to support community resilience.

**REASON** Preparing homes and buildings for a just net-zero transition, supporting rural revitalisation, ensuring communities don't just survive, they thrive.

### THE GOOD NEWS

There is support for **"the right housing in the right place"**.

The **Insulate Innerwick** feasibility project has funding and is working with the community to understand the barriers to making home upgrades.

**Innerwick Village Hall** is about to commence a significant improvement project.

**Oldhamstocks Village Hall** will be demolished and replaced with a new fit-for-purpose building.

There is an active neighbourly **social network** within the villages on Facebook, for informal support.

### DEFINING THE CHALLENGE

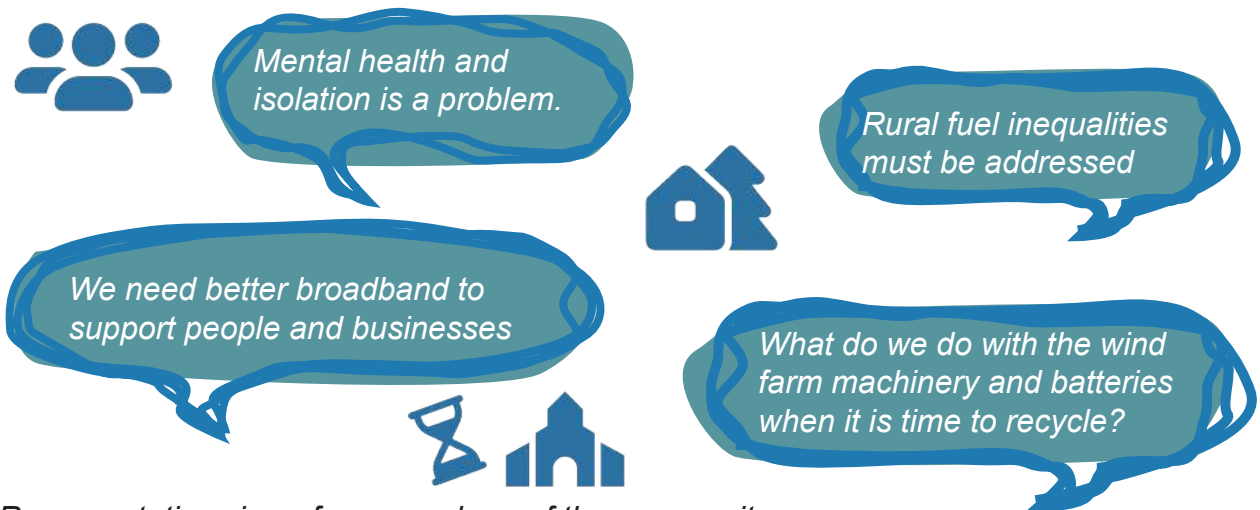
**The climate emergency and increasing fuel prices** require every one of us to manage how we heat and power our homes and vehicles. We need a coherent plan and actions to move quickly towards a net zero future. A good transition is a just transition, which focuses support first to the people who need it most.

**Poor digital connectivity** limits essential services for many.

**Isolation** in rural areas is a major issue, especially post-Covid. We need to be able to meet and feel part of a wider community. Most feel that due to the size of the villages there is **not much scope for permanent shops and services**.

**Housing** for temporary workers is needed as the construction of major infrastructure begins, but where and how, in a sustainable way?

**Protecting historic buildings** and village history.



*Representative views from members of the community*

## Strand 2: Our Places

### PRIORITIES:

- **Schools, Village Halls and Facilities** are the heart of the villages. The schools must be supported to remain viable. Village halls should be upgraded to modern standards. The area around Oldhamstocks Village Hall must be re-zoned to allow community use.
- **Sustainability and Environmental** aspects of housing and buildings - the planning system must support energy efficiency measures within all buildings, especially hard-to-treat homes. Funding must be available.
- **Community Resilience**, combatting isolation and strengthening connections, through subsidised classes and events, low/no cost travel, and improved digital connectivity.
- **Housing needs** today and into the future must be assessed, and housing for temporary workers must be part of a longer term plan. We need the right homes in the right places. In East Lammernuir this may mean small scale sympathetic infill to existing settlements.

*More community gardens, orchards and woodland for sharing.*

*Supply more low cost housing in rural areas*



*Renewable energy sources like shared ground source heat systems must be supported.*



*We need a way for old folks to stay in their own homes as long as possible*

*We need increased funding for village halls in the area to help with running costs*







# Strand 3: The Land

**MAIN GOAL** Protecting the unique and valuable coastline, rivers, hills and woodland. Accessing and managing the precious resource of the land.

**REASON** Health and wellbeing, stewardship and civic pride, preserving the valuable connection to our cultural and built heritage, ecological benefits.

## THE GOOD NEWS

The **rich landscape** of East Lammermuir is a fantastic natural asset covering hillside and hilltop, coast, woodland, and agricultural use.

Most people feel it is **easy to access** play and sport opportunities for health and recreation.

The **Site of Special Scientific Interest and fossils** at the coast attracts students and visitors.

The rich **bird life and wildlife** is enjoyed and valued by all ages.

## DEFINING THE CHALLENGE

**Loss of farmland and landscape setting** along with compromise of the views to the countryside, by large scale Energy Infrastructure.

**Lack of knowledge of archaeology** in the existing landscape, including Iron Age sites around Spott.

The **impact of development and roads on wildlife**, including habitat destruction, bird nesting site disruption, and landscape network interruption, including the A1.

**Environmental Impact of the landfill and Cement Works.** In the context of the 2023 fire at the Valencia landfill site, there is widespread concern about management and risk.

Once it's gone, it's gone!

We're blessed with Iron Age sites around here but there's nothing known about it"

More public access to the countryside - particularly the Hopes Estate

Views, especially to the sea, should be protected

Is the waste mountain going to reduce?

Representative views from members of the community

## Strand 3: The Land

### PRIORITIES;

- Demand continuing communication with the Valencia landfill site subsequent to the fire of August 2023, with greater transparency over the processes and risks.
- Celebrate the value of **Heritage** in our villages and landscape. Interpretation material for the sites of archaeological interest.
- Enhance and protect **ecology and geology** through policy protections for the habitat network, enhancement of key areas through **re wilding**, towards greater biodiversity.
- Implement a programme of road and path improvements which includes a strategy for increasing biodiversity through **ecological enhancements to road verges**.
- Understand and **manage the change** that major infrastructure brings to the area, with key roles created within East Lothian Planning Department to coordinate the landscape proposals within Energy Infrastructure applications.

*Re-establish the biodiversity of the Burn*

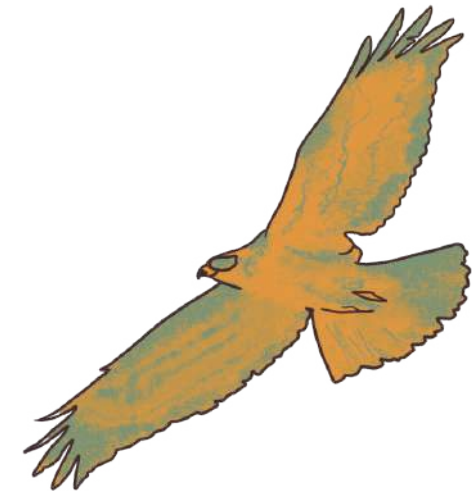
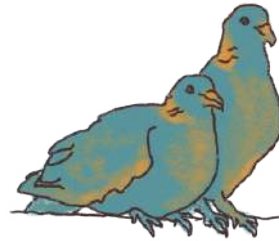
*We need policies to improve biodiversity in the community and designate areas to wild meadows*

*It's nice to be out in nature*

*Community gardens are a great idea*

*Restore the high value landscape views and start to repair the disconnected habitats*

*We want a secret treehouse, where everyone can play and relax*



# Detailed Actions

The actions have been categorised into four sections;

Managing Change in the Just Transition,

Strand 1: Getting Around,

Strand 2: Our Places,

Strand 3: The Land

A successful action plan is SMART  
Specific,  
Measurable,  
Attainable,  
Relevant,  
and Time-Bound]

Each action has a list of who can help







# Managing Change in the Just Transition - An Action Plan

**PRIORITY; A JUST TRANSITION IS BOTH THE OUTCOME – A FAIRER, GREENER FUTURE FOR ALL – AND THE PROCESS THAT MUST BE UNDERTAKEN IN PARTNERSHIP WITH THOSE IMPACTED BY THE TRANSITION TO NET ZERO.**

Just transition is how we get to a net zero and climate resilient economy, in a way that delivers fairness and tackles inequality and injustice. In East Lammermuir that includes building up bonds of trust in the system, which have been broken.

The Energy Consents process controls Energy Infrastructure applications. ELC are statutory consultees in that process, and apply local planning policy to Energy Consents applications, looking particularly at the applicants' Environmental Impact Assessment. Design policy is not applicable to Energy Consent applications. Applications are not limited to specific areas, or zoned in the Local Development Plan. In addition, a recent change to the standing orders has been laid before ELC, giving Members the opportunity to take the consultation response to Planning Committee for a determination.

ACTION PLAN	WHO CAN HELP	TIMESCALE
All Developers sign up to the Developers Charter which commits the developers to ongoing, meaningful consultation and information sharing.	Energy Developers	Developers Charter underway and signed by two of the larger developers - all developers must sign up
One point of information administered and updated by the developers, with one point of contact for the community.		Underway - SSE administrating this work, see website <a href="http://eastlammermuirdevelopments.co.uk">eastlammermuirdevelopments.co.uk</a>
Meaningful consultation and joined up approach to developments - cumulative effects of impact of applications must be clear to the community to allow appropriate comment.	ELC Energy Developers	Underway - to continue, with due respect for the time and energy expended by community volunteers who are disproportionately impacted.
Planning traffic management - with advance communication on many channels, to be agreed with the community.	ELWOC Biodiversity	Underway; Energy Developers and ELC looking into mechanism of funding.
Community understanding of the environmental impact on the landscape and coast, and coordinated mitigation effort between developers. Biodiversity Officer within ELC to work only on the energy projects.	Community Liaison Group Community	Underway; Energy Developers and ELC looking into mechanism of funding.
Information must be available for the community about the long term impacts - including how to recycle the infrastructure [Circular Economy NPF4]	Construction Traffic Liaison	Short term - linked to planning conditions
'Waste' heat from energy infrastructure to be captured for district heating systems	Group	Underway - planning conditions require Energy Developers to undertake feasibility
We call on Scottish Government to continue supporting the community in East Lammermuir, and to take cognisance of the report 'A Fair Energy Deal for Scottish Communities; Call to Action'. The report calls on Scottish Government to take forward; <i>'Accelerating growth in the community energy sector, Setting a wholly owned community energy target – 1GW by 2030, Addressing opportunities and challenges arising from repowering, Increasing uptake of shared ownership opportunities, Mandating developers to report on community benefits, Updating Good Practice Principles for Community Benefits, Creation of a Scottish community wealth fund'</i> *	Scottish Government	

\* Community Energy Scotland and Development Trust Association Scotland (2024) 'A Fair Energy Deal for Scottish Communities; Call to Action' Available from [communityenergyscotland.org.uk](http://communityenergyscotland.org.uk) [Accessed 22.03.24]



# Managing Change in the Just Transition - An Action Plan

**PRIORITY; COMMUNITY BENEFITS ARE COLLECTED AND ADMINISTERED FAIRLY, SUPPORTING THOSE WHO MOST NEED THEM AND WHERE THEY WILL MAKE MOST IMPACT.**

**East Lammermuir is disproportionately affected by the transition to Net Zero.**

Some of the developers will be required to pay Community Benefits. Others will choose to do so.

East Lammermuir Community Council - now restructured to separate the Community Council and Community Trust and Benefits Fund - have experience of managing and administering benefits through the region, and have funded projects with positive outcomes for people and the landscape.

*'The opportunity is now to ensure that the wealth in this green revolution can be more equitably shared, and we learn the lessons of the oil revolution, where so few communities benefited from Scotland's natural resources.'*\*

ACTION PLAN	WHO CAN HELP	TIMESCALE
The principles of a <i>Thriving Community Partnership Agreement</i> * between energy developers / land owners and the community, should be used where there are major land use changes that are impacting on local communities.	Energy Developers ELC ELCC Landowners Village Community Associations/Parish Welfare Association Association of East Lothian Community Councils Benefits [AELCCB]	Ongoing and in line with emerging approvals and applications
Community agency in decision making must be advanced. Agency must go beyond the norms of consultation, participation and even engagement. Agency means that communities have a voice that gives real power in determining their future, in partnership with other stakeholders and with owners in particular. Agency aims towards achieving win-win outcomes for all, with the common social and ecological good as the yardstick.		
There must be wellbeing benefits (financial and non-financial) accruing to the local community		
Local economic leakage is reduced as far as possible with local businesses and suppliers preferred for delivery of goods and services; linkages and multipliers through and within the local economy are optimised.		
Energy companies commit to jobs and opportunities to young people locally.		
Local economic social cultural and environmental rights are advanced.		eastlammermuirdevelopments.co.uk now in place
One point of information is administered and updated by the developers, with one point of contact for the community.		Ongoing and in line with emerging approvals and applications
Community cohesion is strengthened, and principles of Free Prior and Informed Consent are understood and met.		
Carbon commitments in the management of the asset tend towards carbon zero. This includes a whole-life plan for infrastructure, in alignment with NPF4 Circular Economy policy.		

\* Text on this page adapted from Community Land Scotland (2023) 'Beyond Community Benefit – a new deal for thriving communities' Available from <https://www.communitylandscotland.org.uk/> [Accessed 22.03.24]

IN PRE VALIDATION CONSULTATION



## Strand 1: Getting Around

### **PRIORITY: A SUSTAINABLE TRANSPORT STRATEGY TO KEY LOCATIONS, THROUGH AND BEYOND THE AREA, BY BUS OR SIMILAR MEANS**

The population is dispersed, with key destinations in Dunbar, Haddington East Linton and Cockburnspath. There must be no further deterioration of the bus service, and a new Demand Responsive Transport Pingo -style service should be trialled and supported by the community.

<b>ACTION PLAN</b>	<b>WHO CAN HELP</b>	<b>TIMESCALE</b>
<p>East Lothian Council are funding a three month pilot scheme beginning March 2024, run by Eve's Coaches. This "Demand Responsive" service has flexible pick-up and drop-off locations within a defined area around Innerwick and Oldhamstocks into Dunbar. Bookings can be made by phone, online or through an app, with the service running 7am-9pm Mon-Fri.</p> <p>The success and potential for continuation of the service after the pilot relies on uptake.</p>	<p>East Lothian Council Local Bus Companies Local IT company Liftango</p> <p>The Community Council and other community groups can help spread the word and show people how to use this service. To encourage uptake</p>	<p>Pilot scheme underway, launched March 2024</p>
<p>Subject to the success of the pilot project, Demand Responsive Transport service continuing and expanding after March 2024</p>	<p>ELCC will fund the first 100 charged journeys.</p>	<p>Post June</p>
<p>Bus linking Dunbar-- Spott - Stenton - East Linton, linked to the X7 timetable, and train timetable, allowing interchange between modes.</p>	<p>East Lothian Council East Lothian Bus Forum</p>	<p>Ongoing</p>
<p>Buses in the evening, post 7pm and seven days a week</p>		
<p>Oldhamstocks and Spott - Electric car charging points should be sensibly located through consultation with the community. The maps contain suggested locations.</p>	<p>East Lothian Council</p>	<p>Short-term</p>
<p>Innerwick - partial removal of wall adjacent to existing electric car charging points, to improve accessibility</p>	<p>East Lothian Council - area under ELC ownership</p>	<p>Short-term</p>
<p>Spott and Oldhamstocks - Bike racks installed - see map for suggested locations</p>	<p>East Lothian Council Other agencies [Sustrans]</p>	<p>Short-term</p>





## Strand 1: Getting Around

### PRIORITY; A CYCLING AND WALKING STRATEGY WITH SAFE, DIRECT, APPROPRIATELY DESIGNED PATHS AND CYCLE ROUTES IN A CONNECTED NETWORK

A connected network of off-road or carefully engineered paths and cycle routes should connect the villages to each other, and to the coast, Cockburnspath, Dunbar and East Linton.

ACTION PLAN	WHO CAN HELP	TIMESCALE
New and improved path loops around the countryside should provide accessible routes wherever possible, as per Sustrans design guidance. Where that is not possible or appropriate to their location and character, paths should be designed in keeping with the rural location, with clear signage.	Sustrans ELC SESTRAN ELCC	Short-Long term
Underpass point under the A1 [see maps]	Transport Scotland	Co ordinated with energy infrastructure
Crossing points at the A1 [see maps]	BEAR	
Overpass for cycles and pedestrians over the A1 - see map for details	Energy Developers	
Access to and along the coast and beaches should be possible and attractive for people who walk, wheel and cycle, in a joined up network.	ELC and SESTRAN Energy Developers Sustrans	Short-Long term
Improved access at the cement works quarry, as part of an ecology corridor expansion from the A1 to the coast.	ELC and SESTRAN Nature Scotland Sustrans RSPB	Ongoing
Junctions identified as 'near-miss' locations should have safety improvements, [see maps, eg Pitcox]	ELC Highways	
Spott - Support for path improvements along the Spott Burn - see map for details.	Knowledge-sharing between community groups to explore funding and plan works Landowners ELCC ELC and SESTRAN	Medium term
Stenton - explore option for new leisure loop path to the north-east of the village, and a new path towards Gifford.		Ongoing
Oldhamstocks - reinstate gate and footbridge to the northwest of the village to improve access to the core path		Short term
Innerwick - explore improvements from the A1 into Innerwick, for widening or a parallel path, to allow access to the town and beaches.		Co ordinated with energy infrastructure
Path improvements and new paths parallel to existing roads, identified on maps.		Short-Long term
NB - see the Survey Report for detailed aspirations for new and improved active travel routes.		



## Strand 1: Getting Around

### PRIORITY: ROAD AND PATH NETWORK IMPROVEMENTS AND MAINTENANCE TO ENSURE ACCESSIBILITY AND SAFETY FOR ALL.

In a rural location, roads and paths are the umbilical cord for the community.

ACTION PLAN	WHO CAN HELP	TIMESCALE
<p>The Energy Infrastructure programme will require haul roads for construction traffic. These routes should be designed to create a network of accessible paths and cycleways post-construction.</p>	<p>Energy Developers Lorries In Our Lanes - Community Transport Liaison Group East Lammermuir Community Council [ELCC] East Lothian Council Highways [ELC] Sustrans Cycling UK Transport Scotland</p>	<p>Co ordinated with energy infrastructure</p>
<p>Oldhamstocks - speed limit should be 20mph, in line with other East Lothian villages - see map for suggested limits of speed restrictions</p>	<p>ELC Transport Scotland</p>	<p>Immediate</p>
<p>Spott and Stenton - speed reduction measures and speed limits should be extended - see maps for locations</p>	<p>ELC Transport Scotland</p>	<p>Immediate</p>
<p>General maintenance and response to reporting of potholes should be addressed promptly.</p>	<p>ELC Community can flag on the ELC website <a href="http://eastlothian.gov.uk/report">eastlothian.gov.uk/report</a></p>	<p>Ongoing</p>
<p>Passing places identified on maps, especially between Oldhamstocks and the A1</p>	<p>Transport Scotland Energy Developers</p>	<p>Co ordinated with energy infrastructure</p>
<p>Developers and ELC to work with ELCC and local residents to agree a different approach to developer-funded roads maintenance.</p>	<p>ELC ELCC Traffic Group; Lorries in our Lanes</p>	<p>Co ordinated with energy infrastructure</p>

# Strand 1: Getting Around; Crossing the A1

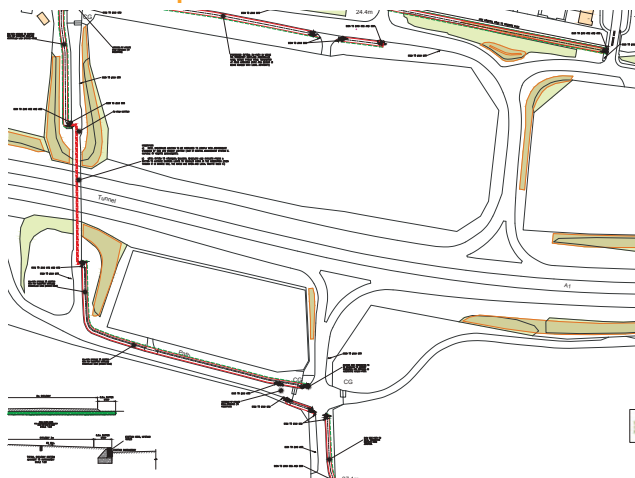


1 - Eweford Underpass



Underpass frequently floods, no adopted path/

**Indicative improvements**



Preliminary design for improvements to Eweford Underpass, provided by Sustrans

Improved lighting and new segregated cycling / wheeling / footway, parallel to private track.

2 - Spott Roundabout existing at-grade crossing



Poor crossing over dual carriageway.

**Indicative improvements**



Adapted from Roundabout in Dumfries

Toucan crossing at new Traffic lights, coherent upgrades to Spott roundabout, prioritising active-travel and consistent with the Connecting Places Dunbar project. Designs for over- or under-pass would also be considered.

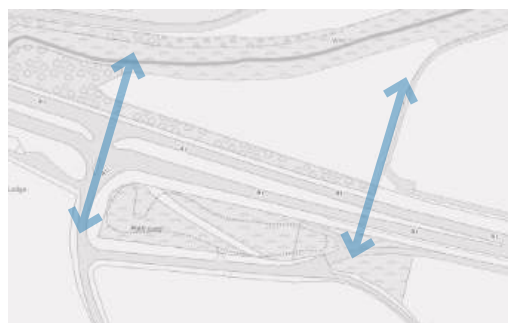
IN PRE VALIDATION CONSULTATION



# Strand 1: Getting Around; Crossing the A1



3 - Innerwick junction - no crossing point



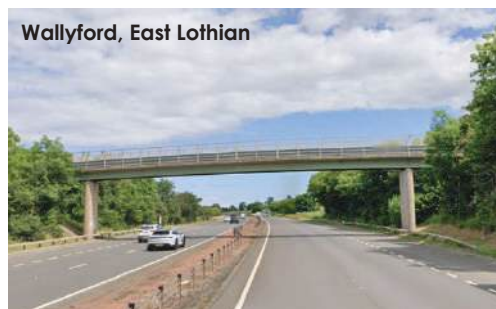
Track along the edge of agricultural field north of A1

Strong desire line to the NCN, coast, and Dunbar.  
Opportunity to coordinate with cable crossing point for Energy Infrastructure.

### Indicative proposed crossing



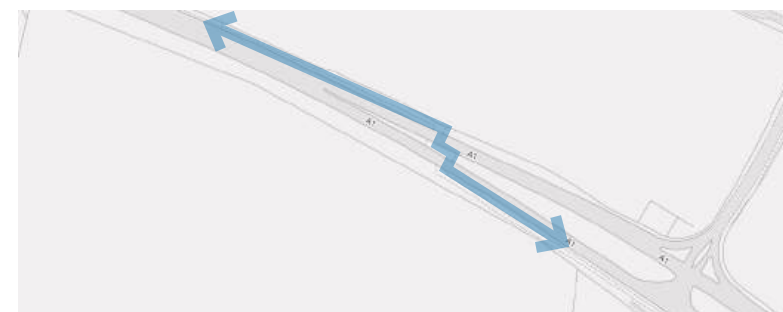
Monksmuir Park, Haddington



Wallyford, East Lothian

Underpass for walking, wheeling and cycling, linking to existing paths.  
Longer term aspiration - upgraded vehicular junction to the A1, with overpass.

4 Torness crossing



Poor at-grade crossing for cyclists, poor signage and unsafe.

### Indicative proposed crossing




Alloa, Clackmannanshire

Overpass for walking and cycling, allowing access to NCN, coast and Dunbar.



## Strand 2: Our Places

<b>PRIORITY: SCHOOLS, VILLAGE HALLS AND FACILITIES ARE THE HEART OF THE VILLAGES</b>		
The schools must be supported to remain viable. Village halls should be upgraded to modern standards. Improve access to work and leisure opportunities for young people.		
<b>ACTION PLAN</b>	<b>WHO CAN HELP</b>	<b>TIMESCALE</b>
Allocate the land around Oldhamstocks Village Hall to include Community use, allowing a new Hall to be built.	ELC Planning	Forthcoming LDP 
Stenton - Support Stenton Primary School to ensure the school remains viable - potential to readdress the catchment area?	ELC Education	Next catchment review
Explore viability and deliverability of more mobile or seasonal services and retail to the villages, around a "Mobile Village Hub" with Post Office, Banking Hub and Mobile Library coordinated	ELCC Parish Associations Private sector - retailers and services ELC Library Services	Immediately
Innerwick - Support and finance for Innerwick Village Hall refurbishment. The proposals have planning approval, and Building Warrant approval is currently sought.	Innerwick Parish Welfare Association SCIO [IPWA] ELCC Energy Developers Other agencies / funding	Ongoing Q2 2024, subject to appointment of contractor.
Innerwick Old School / Field Education Centre, short term - support and finance to explore options for the Centre with the aim of bring use back to the building. Use the buildings as a temporary Village Hall during hall renovations Look for funding for a business plan, and gather info from current owners ELC	IPWA ELC	Ongoing Short term - to 2025
Innerwick Old School / Field Education Centre, long term - explore options with the community for use of the Old School; potential use as accommodation or community cafe/shop.	IPWA ELC	Long term
Oldhamstocks - Support and finance for Oldhamstocks Village Hall demolition and new build. This includes relocating the park, which will be within the new Village Hall site.	Oldhamstocks Community Assoc. ELCC	This will begin in Q4 2024, subject to planning permission and appointment of contractor.
Oldhamstocks - retain the Church in community ownership	Church of Scotland Local residents	Ongoing



## Strand 2: Our Places

### PRIORITY: SCHOOLS, VILLAGE HALLS AND FACILITIES ARE THE HEART OF THE VILLAGES

continued from previous page

ACTION PLAN	WHO CAN HELP	TIMESCALE
Support and funding towards the long term future of existing community events such as the four village Flower Shows.	ELCC Community	Ongoing
Additional community events, area-specific, to bring people together	DELAP Village Associations / Committees	Longer term
Potential to explore a Community Climate Action Hub or café, supported by community benefits.	ELCAN Sustaining Dunbar Energy Developers	Longer term
A potential Learning Hub could be sited close to Dunbar, supporting the upskilling of local people in traditional building skills, emerging construction techniques, and key skills to support the energy projects.	Outside the ELCC area The Ridge Multiple agencies and stakeholders	Longer term





## Strand 2: Our Places

<b>PRIORITY: COMMUNITY RESILIENCE, COMBATting ISOLATION AND STRENGTHENING CONNECTIONS.</b>		
Communities must be able to thrive - in an increasingly technologically driven society, local communities should be able to regularly come together		
<b>ACTION PLAN</b>	<b>WHO CAN HELP</b>	<b>TIMESCALE</b>
Improve the poor internet connectivity – a big issue for many people and limits small businesses. This disproportionately impacts rural communities and increases risk of isolation.	Private sector communications companies ELC	Immediate
Explore opportunity for work hubs, more connection between local businesses – potential for co working space in Dunbar.	Local community ELCC Parish and Community Associations Sustaining Dunbar	Ongoing - Sustaining Dunbar looking at opportunities in the town.
Build on the connection between villages, through a digital platform [Facebook currently a good source of local information] and in a physical space – village halls.	Local community East Lammermuir Community Benefits Trust and Fund (ELCBT)	Immediate
Subsidise classes in the village halls, explore potential interest for movement classes, other types of classes.	Local community ELCC Parish Associations	Immediate
Low or no cost bus travel between villages and to Dunbar – see East L Go pilot project.	East Lothian Bus Forum ELC Bus providers Energy Developers	Ongoing
Support all village Flower Shows through funding and awareness.	Local community Energy Developers ELCC DELAP Village Associations	Ongoing
Support small businesses through economic grants and advice, explore the potential for pop-up businesses on Dunbar High Street.	Dunbar Traders Assoc Private sector Small business funders Energy Developers	Underway - In The Neighbourhood Pop-up Shop on Dunbar High Street
Support start-up businesses in rural locations, through funding opportunities, and advice	Small business funders The Ridge, Dunbar - Advice available Energy Developers	Long term
Promote appropriate tourism, recognising pressures and mitigating negative impacts.	Our Dunbar - Dunbar Traders Assoc Visit Scotland	Long term



## Strand 2: Our Places

<b>PRIORITY: SUSTAINABILITY AND THE ENVIRONMENT ASPECTS OF HOUSING AND BUILDINGS</b>		
Communities must be able to thrive - in an increasingly technologically driven society, local communities should be able to regularly come together		
<b>ACTION PLAN</b>	<b>WHO CAN HELP</b>	<b>TIMESCALE</b>
Electric car charging points should be installed in Oldhamstock and Spott – see maps for details of suggested locations	ELC Other agencies	Short term
System support for local energy groups, including Insulate Innerwick	East Lothian Climate Action Hub Sustaining Dunbar	Ongoing
Build awareness of the Local Heat and Energy Efficiency Strategy [LHEES] by ELC, and what that means for everyone in the community.	ELCC Sustaining Dunbar Community Energy Teams	Ongoing
Clearer and consistent planning regulations to allow home energy upgrades in Conservation Areas and for listed buildings	ELC Planning Team	★ Next review of residential guidance
Coherent plan for Net Zero;		
Renewable energy sources like shared ground source heat systems and district heating, linked to village halls.	Local Energy Scotland CARES funding Energy Developers ELC	Ongoing
Decarbonise heating of homes - support to raise awareness of home energy upgrades, funding opportunities and trusted tradespeople.	ELC Energy Team East Lothian Climate Action Hub Sustaining Dunbar Home Energy Scotland - Scottish Govt	Ongoing
Support for home energy upgrades in terms of policy framework, planning policy, financial framework, skills availability, and supply chain framework	Scottish Government ELC	Ongoing
Support for small scale community-owned district heating systems, from planning to funding and installation.	ELC ELCC	Ongoing
Support for community-owned energy generation; wind, solar, HEP and BESS and other emerging technologies	Energy Developers Community Sustaining Dunbar	Co ordinated with energy infrastructure
Community tree planting initiative - locations to be determined by a biodiversity group, in line with ELC's woodland strategy	Energy Developers Community	Medium-longer term



## Strand 2: Our Places

PRIORITY: HOUSING NEEDS, TODAY AND INTO THE FUTURE.		
ACTION PLAN	WHO CAN HELP	TIMESCALE
Assess and address the future need for housing from temporary workers. Look locally for skilled workers.	Local Councillors	Programmed to anticipate energy infrastructure construction
Link with schools and colleges to identify supply chain and skills gaps within the community.	Surrounding Community Councils to add their voices to the issue.	
Form a strategy for housing temporary workers that is sustainable and recognises the failures of the past (Torness). Look for good Scottish precedents.	ELC	
Oldhamstocks - identify appropriate small site for new permanent affordable housing outside village and conservation area but within parish boundary.	Landowners ELCC Local residents	In line with housing needs
Innerwick - Expand the currently allocated site for new housing to the north of the village, allowing for appropriate expansion of the village and new edge to the settlement. Additional notes on the Innerwick spatial map.	ELC	★
Shared views on how East Lammermuir contributes to East Lothian and Scotland Housing Needs Strategy.		Long term





## Strand 2: Our Places

<b>PRIORITY: HEALTH AND WELLBEING</b>		
<b>ACTION PLAN</b>	<b>WHO CAN HELP</b>	<b>TIMESCALE</b>
A refreshed playpark in Oldhamstocks, replacing the existing facility on the Green. The new park will be well overlooked by a new Village Hall.	ELC Planners ELC Amenity Services team Oldhamstocks Community Association	★ LDP cycle
Use village halls to bring preventative and screening services out to the rural population. Local health and wellbeing clinics linked to mobile Community Hubs.	East Lothian Health & Social Care Partnership [ELHSCP] Dunbar Medical Practices Third sector organisations	Short term
Support development of four Resilience Plans and SPOCs (Single Points of Contact) linked to ELC support network.	ELHSCP ELC	
Strengthen community links between the schools and wider community.	ELHSCP	Medium term
Ensure health and support networks are in place to allow people to stay in their own homes as long as possible.	Multiple agencies and groups Schools	Long term
Publicise Resilience Plans and opportunities to support these.	Community Associations Parish Welfare Association Council Resilience Team	Long term
When planning future health and wellbeing support, consider the needs and aspirations of the local population, through the survey results.	Dunbar Medical Practices ELHSCP	Ongoing



## Strand 3: The Land

PRIORITY: WASTE DISPOSAL		
ACTION PLAN	WHO CAN HELP	TIMESCALE
Demand continuing communication with the Valencia landfill site after the fire of August 2023, with greater transparency over the processes and risks.	Valencia SEPA Community reps	Ongoing
Support ELC's Local Heat and Energy Efficiency Strategy, which will use waste heat from the incinerator to fuel a District Heating network stretching west into and beyond Dunbar.	Viridor Community reps East Lothian Council Eastern Green Link [SPEN]	Short term
Community see and contribute to the Restoration Plan for the Oxwellmains Landfill Site post closure 2025.	ELCC, DCC, SEPA, ELC, Valencia	★ Long term
PRIORITY: CELEBRATE OF THE VALUE OF HERITAGE IN OUR VILLAGES AND LANDSCAPE.		
ACTION PLAN	WHO CAN HELP	TIMESCALE
Spott - Identify a heritage trail through East Lammermuir, beginning with Spott Iron Age sites.	ELC Heritage and Access Volunteers ELC ELCC	Short term
Spott - Land which is the subject of a Community Right To Buy to be earmarked as a Village Green.	Spott Community Association ELC Amenity Services ELC Planners	★
Spott - Land between High Road and the burn retained as landscaped setting. The community will not support allocation of this land for development, due to the unique views north from High Road which are characteristic of the Conservation Area [ELC Policy CH2]		★
Interpretation material for the sites of archaeological interest.	ELC Heritage	Short term
The East Lammermuir coastline is a recognised area of geological interest, with field trips from the University of Edinburgh using the area for learning opportunities. Tap into this opportunity to celebrate the importance of the area.	ELC University of Edinburgh	Medium term
Refresh the archival display of photographs and news clips currently hung in Innerwick Village Hall.	IPWA	Co ordinated with Hall renovations
Expand a consistent approach to increase accessibility to and knowledge of built environment and landscape heritage assets to incorporate the historical sites and assets throughout the East Lammermuir area.	Biodiversity Community Liaison Group	Long term
Consider a local bothy to accommodate visitors to a heritage trail.		Long term



## Strand 3: The Land

PRIORITY: ENHANCE AND PROTECT ECOLOGY AND GEOLOGY, IN THE CONTEXT OF A JUST TRANSITION		
See the accompanying document 'East Lammermuir Local Place Plan 2024-2034 Spatial Plan		
ACTION PLAN	WHO CAN HELP	TIMESCALE
Policy protections for the habitat network, enhancement of key areas through rewilding, towards greater biodiversity.	ELC Woodland Strategy and other departments	★
Programme of work to identify Common Land areas [incl. woodland area near villages] as sites for community projects.	Community groups ELC	Longer term
Explore the opportunity to improve water quality and biodiversity of watercourses and burns, paying attention to agricultural abstraction.	Biodiversity Community Liaison Group	Ongoing
Implement a programme of road and path improvements which includes a strategy for increasing biodiversity through ecological enhancements to road verges. [identified on maps]	ELC	Longer term
Propose Planning Conditions for all future energy infrastructure developments requiring the developer to support and work with the Biodiversity Community Liaison Group to deliver NPF4 Policy 3 Biodiversity requirements	ELC	★
Creation of a Biodiversity Community Liaison Group, to work with the Energy Developers on a holistic approach to changes within the landscape.	Community	Ongoing
Additional Biodiversity Officer role created within East Lothian Planning Department to coordinate the landscape proposals and impact of Energy Infrastructure applications.	ELC	Ongoing
Evidence of genuinely improved and enhanced biodiversity as a consequence of each and every development built in East Lammermuir, with increased involvement of local residents, in accordance with the Scottish Government's commitment to the Convention on Biological Diversity at COP15	Energy Developers and transmission owners Service level agreements	Long term
A shared sense in this community of understanding and influencing how East Lammermuir is a better place as a result of Energy Infrastructure developments.	Energy Developers and transmission owners	Long term