

East Lammernuir Local Place Plan 2024-2034

Spatial Plan

East Lammernuir Community Council

May 2024

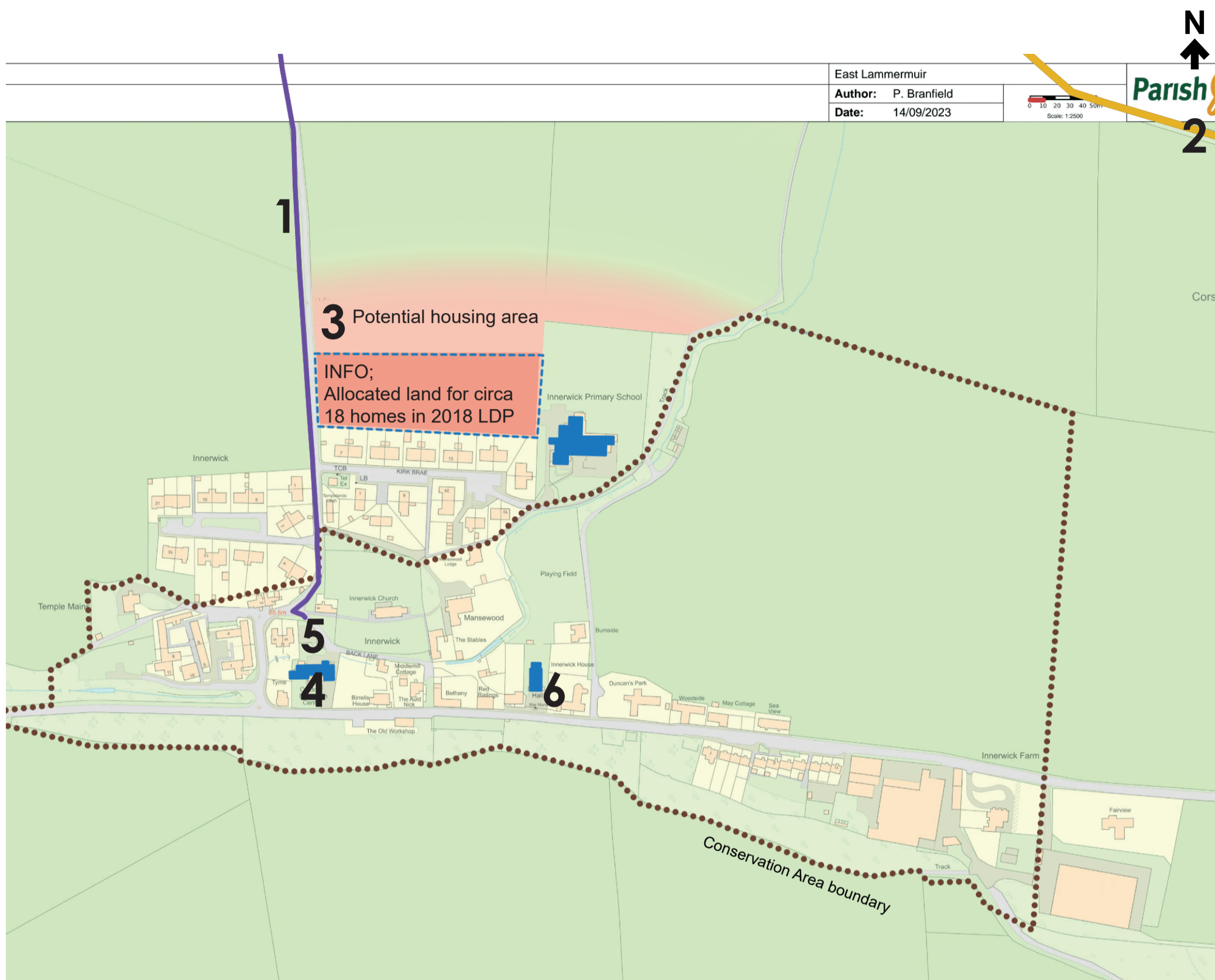
Mapping information

OpenStreetMap information made available under the Open Database Licence

Overlaid maps created with Felt Maps online platform

OS Mapping information made available through Parish Online, Crown copyright and database right. All rights reserved (AC0000574918) 2023

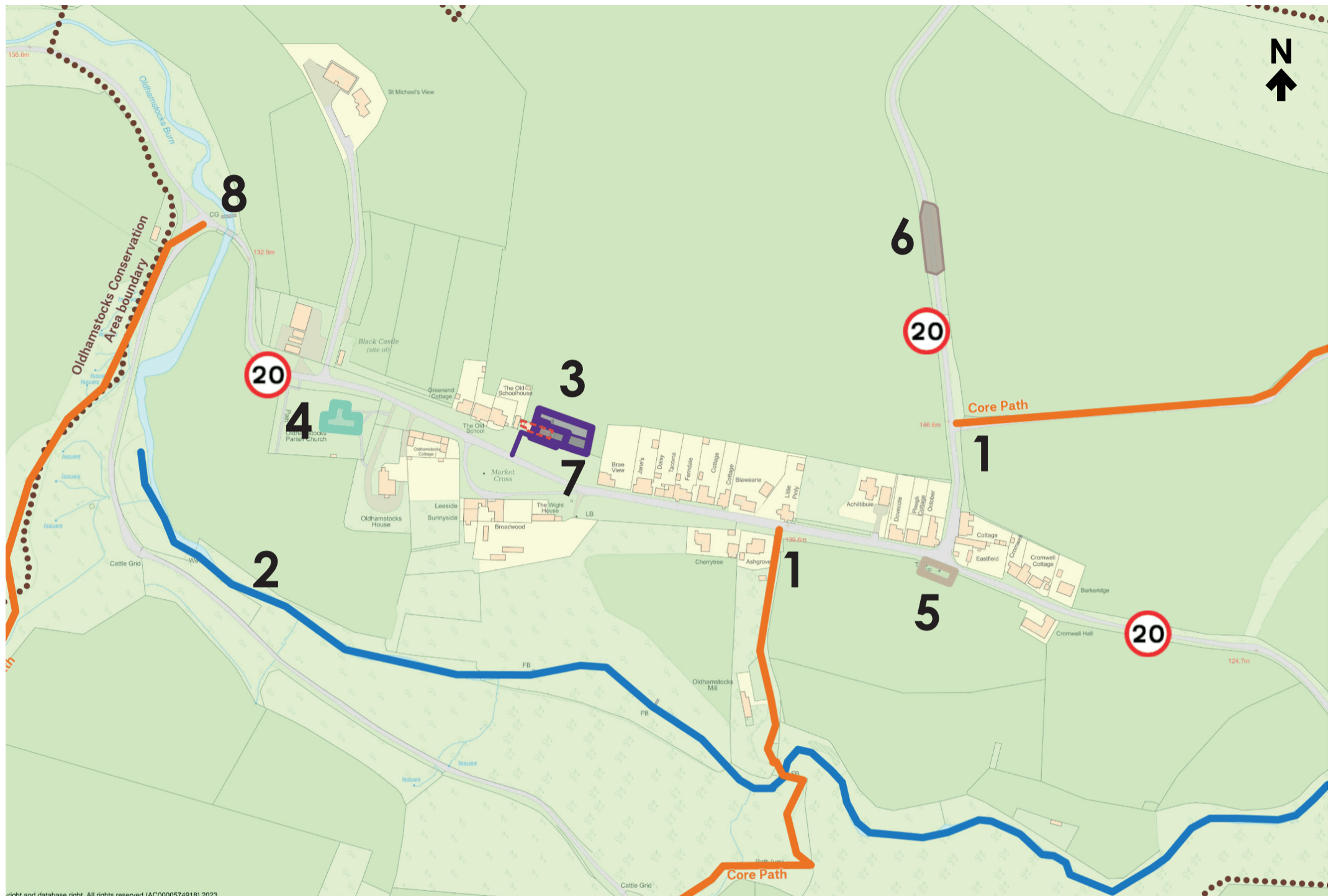
Spatial Plan - Innerwick



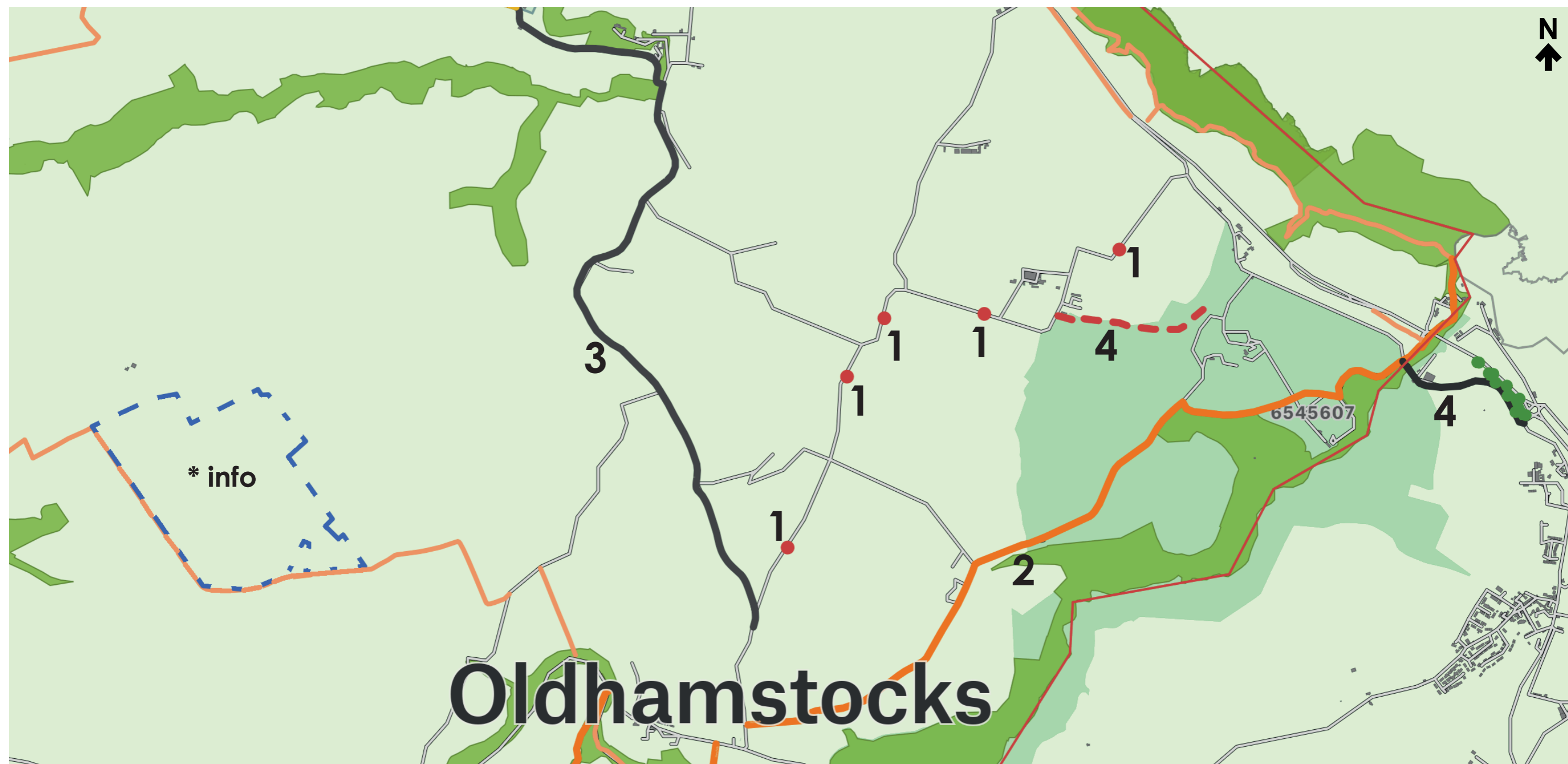
INNERWICK VILLAGE

ACTION PLAN	WHO CAN HELP	TIMESCALE
(1) Safe footpath and cyclepath link to Dunbar	ELC Highways Landowners	★ Co ordinated with Energy Development
(2) Improvements to Market Road and add footway / cyclepath - management of hedgerows. See wider area, this road will be under greater impact from traffic, and is likely to be the line of cables for Energy Infrastructure.	ELC Highways Landowners Energy Developers	★ Co ordinated with Energy Development
(3) Increase the allocated area for Housing to the north of the village.	ELC Planning Officers Landowner	★ LDP cycle
<p>General support for principle of managed appropriate growth of the village, if developed sensitively and with mitigation against and consideration of the impact on the existing village and community.</p> <p>Benefits;</p> <ul style="list-style-type: none"> Sustainable growth of the Village, with a mix of housing which is appropriate for the growing population of the attractive location. A 'relief road' protects the historic conservation area from additional traffic pressure. Opportunity to create an outward facing neighbourhood to complete the edge of the village Expanding the housing offer in Innerwick will support a thriving growing community, and could help support additional community and employment opportunities. Community support for a mix of tenures, multi-generation provision, consideration of Passivhaus standards, appropriate landscape and open space 		
(4) OLD SCHOOL / Field Education Centre Temporary Village Hall while the existing hall is renovated Look for funding for a business plan, and to gather more information from ELC.	Innerwick Parish Welfare Assoc [IPWA] SCIO	Short term
(4) OLD SCHOOL / Field Education Centre Accommodation for walkers or pilgrims, a café or community shop on a similar model to the Co'path shop. Retain in community use. Parking and access to be resolved.	IPWA SCIO	Longer term
(5) Car Charging points access - remove some stone wall and improve surfacing to allow better access.	ELC Highways	Issue raised with ELC by IPWA Chair
(6) Continue programme for renovation of Village Hall, managed by IPWA SCIO	IPWA SCIO ELCC	Ongoing

Spatial Plan - Oldhamstocks



OLDHAMSTOCKS VILLAGE		
ACTION PLAN	WHO CAN HELP	TIMESCALE
(1) Sensitive upgrades to sections of Core Path, to be agreed with relevant landowners, for the improvement of accessibility for all.	ELC Access Officer Landowners	Short term
(2) Improve water quality, improve biodiversity of the Burn	ELC Biodiversity Officer SEPA	Medium term
20MPH throughout Village - indicative locations identified for signage	ELC Highways	Short term
(3) Amend allocation to Community Use, to facilitate the redevelopment of the Village Hall	ELC Planners	★ LDP cycle
(4) Church to be retained in Community Ownership; currently owned by Church of Scotland	ELCC Oldhamstocks Parish Association	Ongoing
(5) Maintain the stone Well Head appropriately. Consider locations for new uses with the bus stop at the historic Well Head area; Drinking Water Fountain Cycle Rack - sized appropriately Waste bin Benches	ELC Community ELCC	★ Medium term
(6) Passing Places - see 'Oldhamstocks Wider Context' plan for all passing places proposed along this route. Location indicative, subject to detailed design and landowner / ELC consents.	ELC Highways Landowner/s	Co ordinated with Energy Development
Electrical Car Charging points - supported in principle by the community, no agreed location.	ELC Highways Landowner/s	Short term
(7) Park and seating to be redesigned with Village Hall, to provide gathering place for all ages. Paths, benches, Play equipment and picnic benches should be accessible for all. Benches and places to rest placed street-side within the village, providing places to rest for all ages, appropriately spaced for relaxed walks around the village.	ELC Greenspace Oldhamstocks Parish Association	★ In line with Village Hall redevelopment
(8) Reinstate gate and footbridge	ELC Access Officer ELCC SEPA	Short term

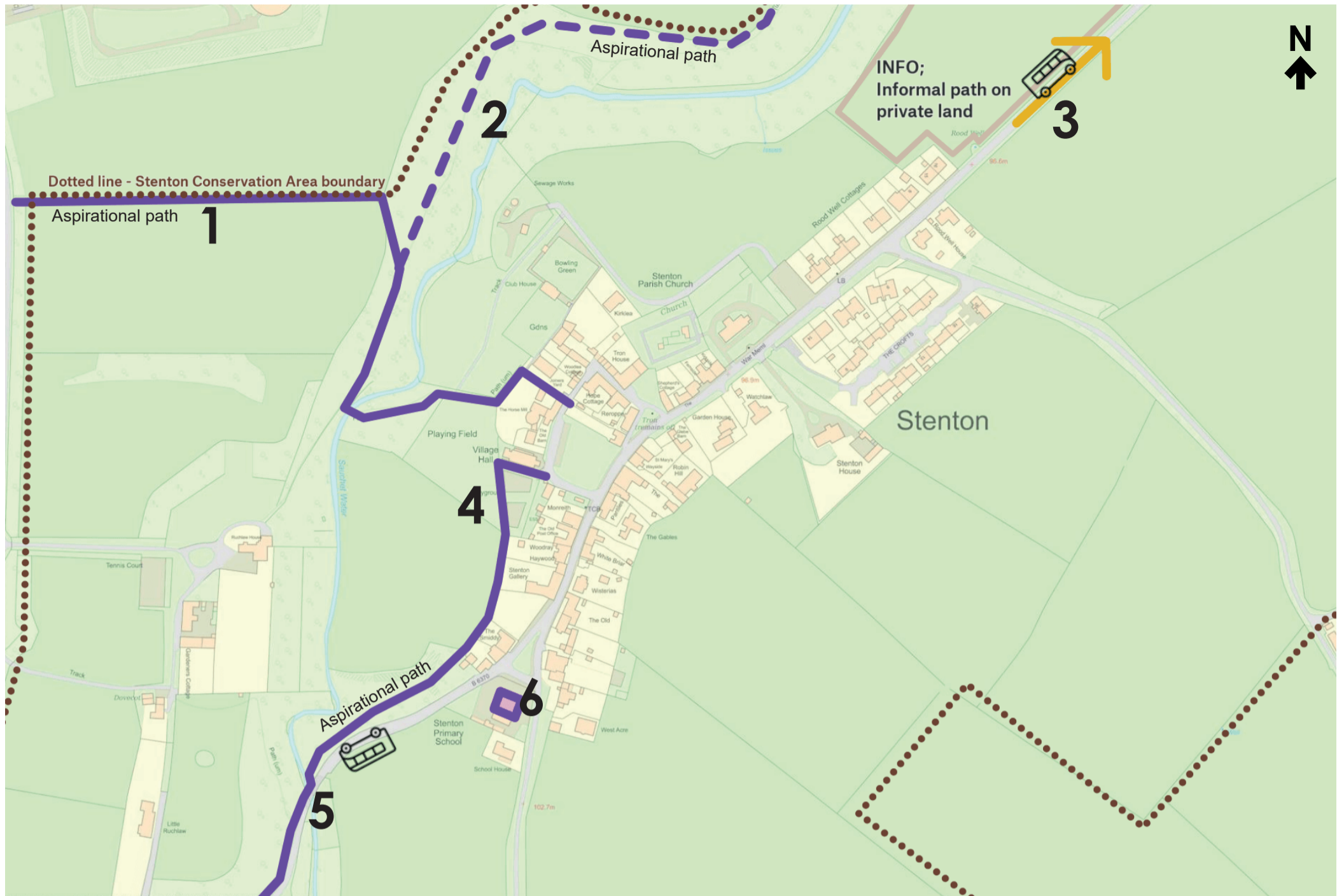


OLDHAMSTOCKS WIDER AREA		
ACTION PLAN	WHO CAN HELP	TIMESCALE
(1) Passing Places	ELC Highways Landowner/s	Co ordinated with Energy Development
(2) Sensitive upgrades to sections of Core Path, to be agreed with relevant landowners, for the improvement of accessibility for all.	ELC Access Landowner/s	Medium-term
(3) This route likely to come under pressure from additional traffic from Oldhamstocks during construction period of the energy infrastructure, upgrades and improvements may be required for vehicular, cyclist and pedestrian safety.	ELC Highways Landowner/s Energy Developers	Co ordinated with Energy Development
(4) New footpath	ELC Access Landowner/s	Medium-term
* Info only; Proposed site for community-owned renewable energy generation		

Key

- Core Paths
- - - Aspirational paths
- Designed Landscape
- Local Biodiversity Site

Spatial Plan - Stenton



STENTON VILLAGE		
ACTION PLAN	WHO CAN HELP	TIMESCALE
(1) Improve the path network and create loop. Look to Spott path improvements as an example	ELC Access Stenton Community Association SCIO Spott Community Association	Medium term
(2) Aspirational footpath - see Stenton wider context map to see looped path through woodland	ELC Access Stenton Community Association SCIO Landowners	Medium term
(3) Improved bus link to Dunbar High Street, linked to the X7 timetable and train timetable	Bus Forum ELC	Medium term
(4) Explore option for a new active travel route towards Gifford	ELC Access	Medium term
(5) Improved bus link to East Linton, linked to the X7 timetable and train timetable	Bus Forum ELC	Medium term
(6) Support and retain Stenton Primary School	ELC Education	

Spatial Plan - Stenton wider context



Key

- Core Paths
- National Cycle Network
- Aspirational paths
- Designed Landscape
- Local Biodiversity Site

STENTON WIDER AREA		
ACTION PLAN	WHO CAN HELP	TIMESCALE
(1) Improve safety at Pitcox junction, change road markings to prevent near misses	ELC Highways	Short term
(2) Perceived as a dangerous stretch of road, improve safety for children and all.	ELC Highways Landowners	Medium term
(3) Explore enhancement of Common Land	ELCC Community ELC Greenspace	Medium term
(4) Improved crossings at A1 - outwith East Lammermuir Community Council area	Transport Scotland Dunbar CC ELC Highways Sustrans	Co ordinated with Energy Development

1

rch of Pitcox Lodge

TCB

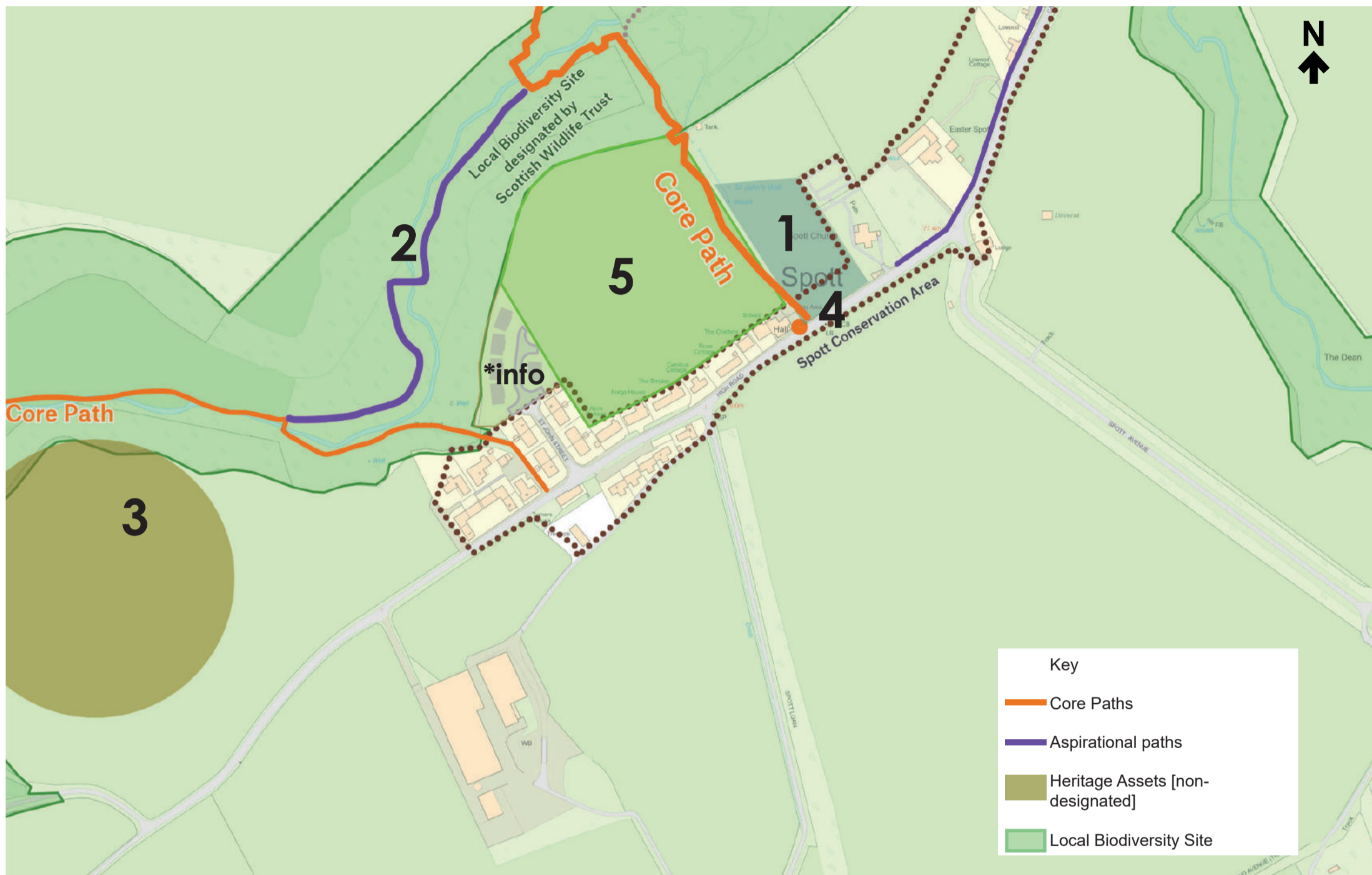
stage

74.7m

d's

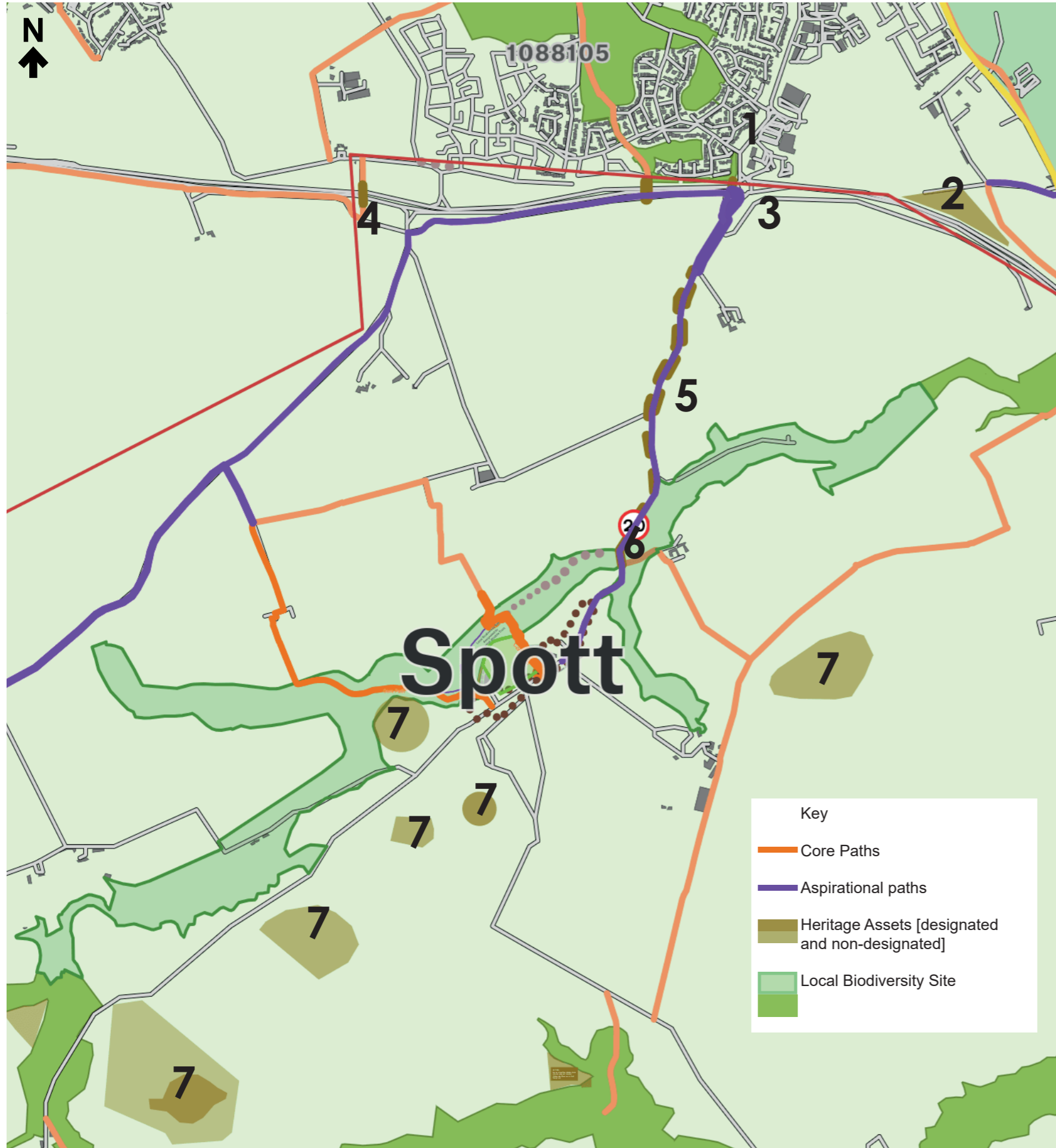
No right turn from west on blind corner

Spatial Plan - Spott

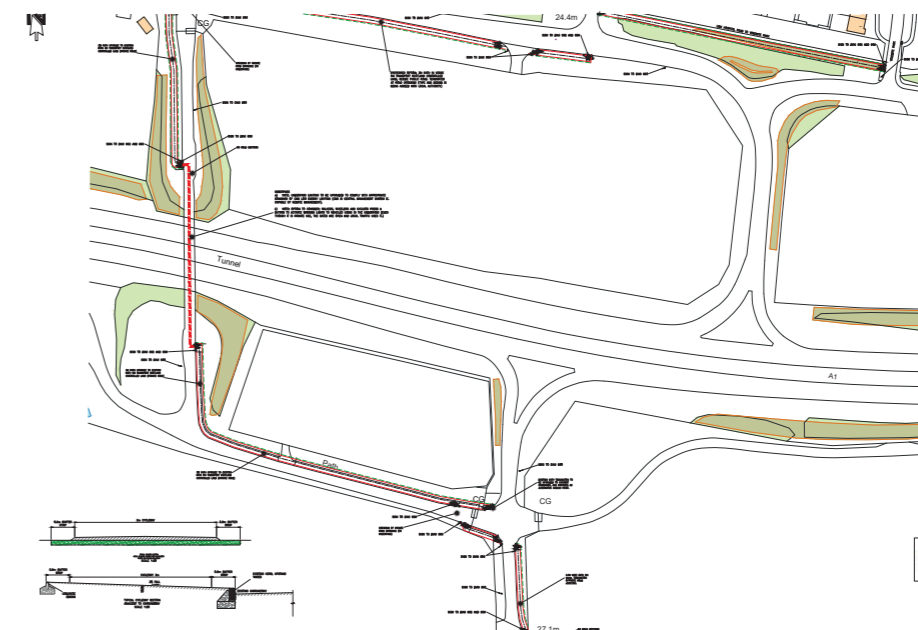


SPOTT VILLAGE		
ACTION PLAN	WHO CAN HELP	TIMESCALE
(1) Community aspiration for this land to become Spott Village Green. Spott Community Association currently has the land between the Village Hall and the Church on the Community Right to Buy register in Scotland. Their hope is that they can purchase this land on behalf of the Community and develop it into green space/amenity land – a Village Green to be held in Trust for the Community. The land sits within the Battle of Dunbar battleground.	Landowner ELC Community Wealth Officer Community Land Scotland ELCC	★ Longer term
(2) Additional path Improvements will be made to improve accessibility.	Landowner has previously agreed - land manager has verbally given permission, written confirmation awaited. Dunbar and East Linton Area Partnership have expressed enthusiasm to explore funding options. SEPA design for the bridge - contacts known from previous project. Spott Community Association	Ongoing
(3) Improve local knowledge of site of archaeological interest [non-designated]	ELC Heritage Officer Spott Community Association	Longer term
(4) Cluster additional community uses at the Village Hall - Bike racks - Potential location for Car Charging point	ELC ELCC	Short term
(5) The community does not support any development on this site. Area should be left as open space, preserving the landscape setting of the village, unique views north which are a key feature of the Spott Conservation Area		No action
Explore potential for - improved bus service - work hubs to support small businesses	Bus Forum Spott Community Association Sustaining Dunbar	Longer terms / as required
Spott Village should not be a diversion route for HGVs when A1 is diverted	ELC Highways	Short term
*INFO; 20/00248/P Erection of 5 houses and associated works - undetermined as of March 2024	-	-

Spatial Plan - Spott wider context

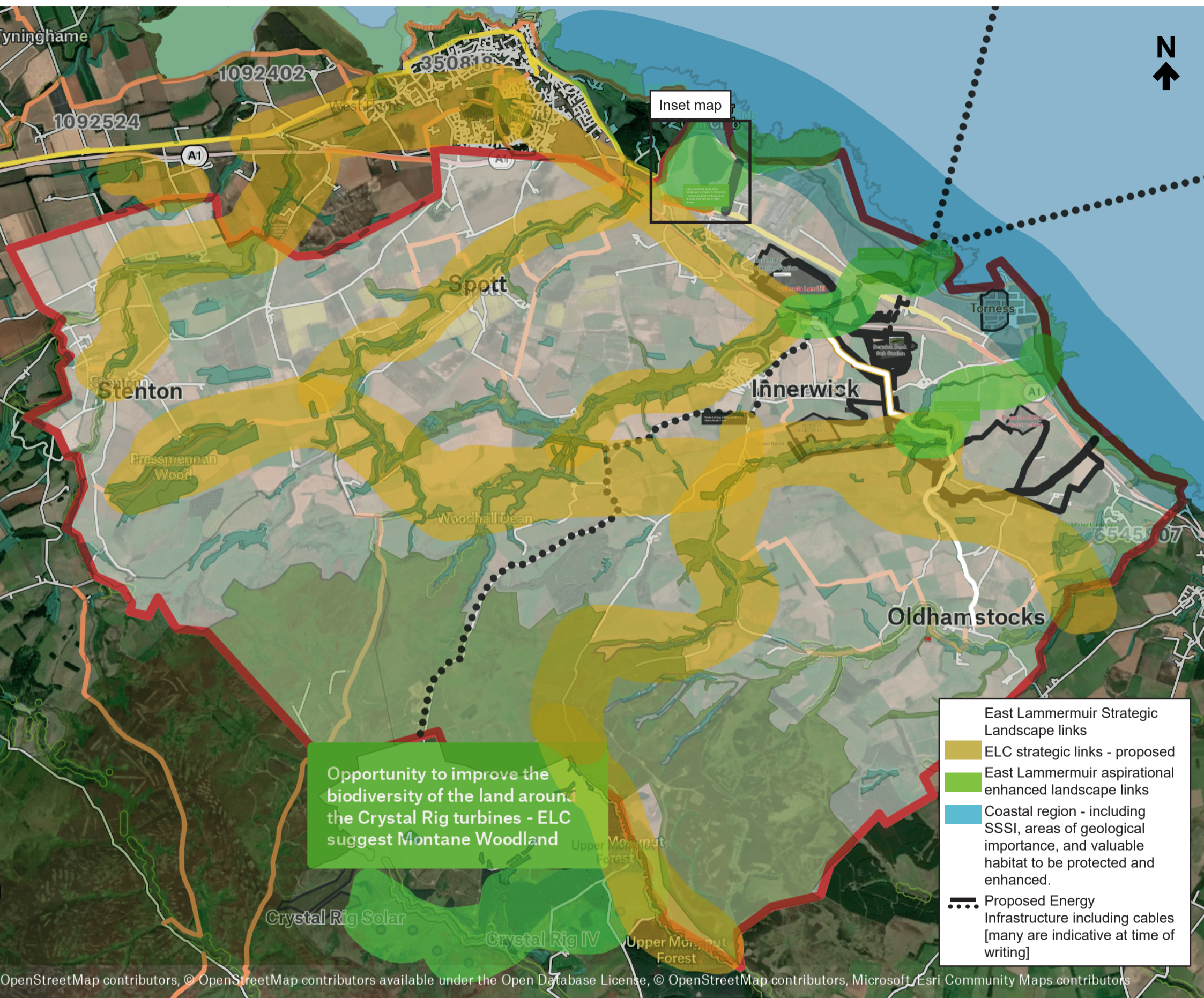


SPOTT WIDER AREA		
ACTION PLAN	WHO CAN HELP	TIMESCALE
(1) Improve pedestrian and cycle experience along Spott Road - better connection to facilities in Dunbar - outwith ELCC area, support the work of Sustaining Dunbar and the Connecting Dunbar project, which is seeking to improve paths we use day-to-day.	Sustaining Dunbar; Connecting Dunbar Sustrans Community - engage with the current consultation	Ongoing
(2) Support TheSpace - facilities for everyone, particularly older children - outwith ELCC area	Community - engage with the Pre application consultation ELC DELAP, Dunbar Community Council, East Lammermuir Community Council - support the forthcoming application	Pre-application phase ongoing
(3) Improve Crossing at A1 - over or under. Consultation should inform the options.	Transport Scotland	Co ordinated with Energy Development
(4) Improve underpass as per Sustrans preliminary drawing [see inset]	Transport Scotland Sustrans	Short term
(5) Create a parallel footpath / cyclepath on one or both sides of the carriageway	ELC Highways Landowner/s	Medium term
(6) Increase 20MPH zone to include Canongate Bridge - accident hotspot. Improve visibility, maintain planting (cut back vegetation, ELCC will speak to landowner) , and improve ped/cycle safety at Canongate bridge. Robust speed reduction measures - explore option for traffic lights at the bridge	Transport Scotland ELC Highways ELCC	Short term
(7) Improve local knowledge of site of heritage interest [Scheduled Monument - Doon Hill Fort] as part of a heritage trail.	ELC Heritage - contact at ELC has confirmed they welcome and support this aspiration. Community	Short - medium term



Preliminary design for improvements to Eweford Underpass, provided by Sustrans

Spatial Plan - Landscape, Natural Corridors and Woodland



LANDSCAPE, NATURAL CORRIDORS AND WOODLAND

ACTION PLAN

Overarching aim; protect, retain and enhance a network of semi-natural areas and open space. Promote biodiversity, regenerative soil management, land, climate, flora and fauna of East Lammermuir.

Support climate friendly land uses and agricultural practices that enable nature recovery ie increase the stock, range and diversity of local flora and fauna along those corridors and also beyond.

Enhance the landscape, views and built heritage, which makes East Lammermuir a distinctive place.

Create and enhance the strategic network proposed by ELC, shown in yellow above.

These network links should be extended to the coast, incorporating accessible paths to minimise pressure of roaming through natural space.

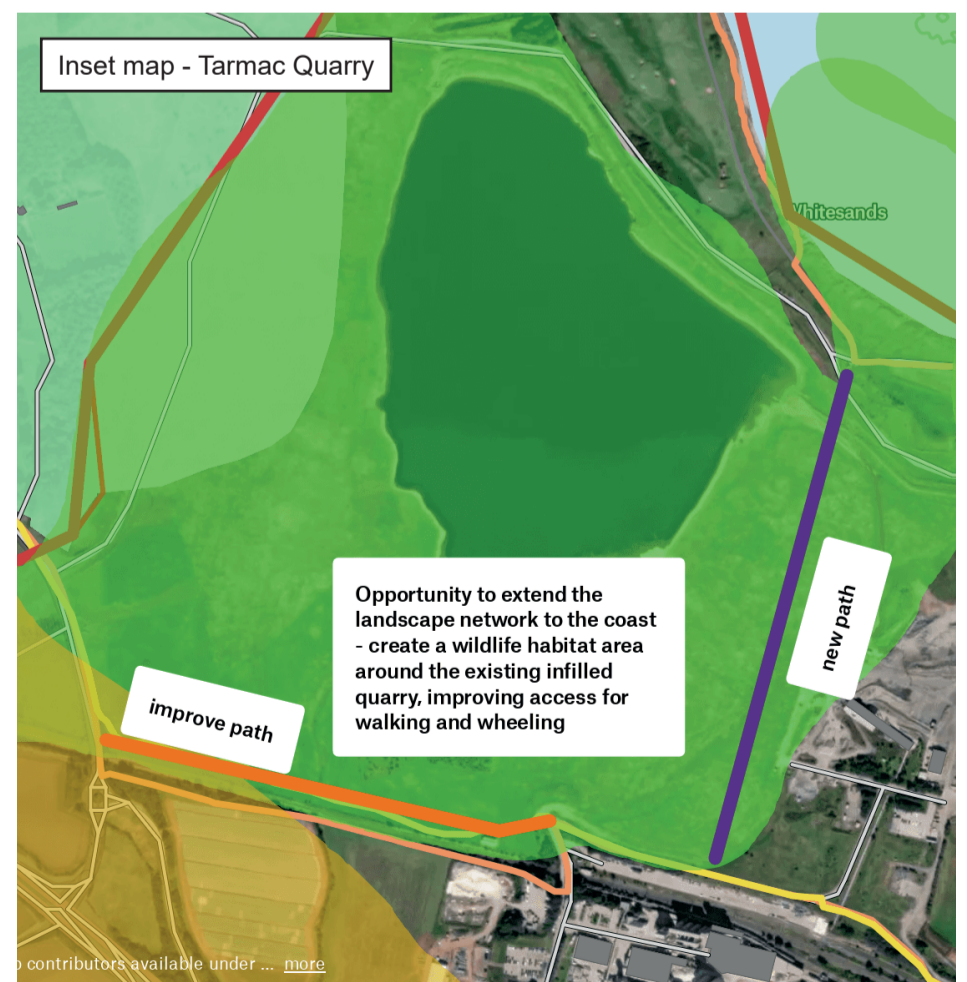
Careful management of sequencing during construction work, minimising impact on migrating birds and the landscape network, particularly along Market Road and around the proposed Branxton Sub Station, which sits at the convergence of the strategic landscape network, to the east of Innerwick.

Widen the adoption of nature-based solutions to mitigate effects of climate change, by encouraging rewilding opportunities in the hills and valleys and adopting strategies for managed retreat at scale along river corridors and the coast.

Detailed actions and landscape network design to be co-designed with Biodiversity Community Liaison Group, with short term, medium term and long term programming, appropriate for the scale of the task.

Energy Developers to continue to support biodiversity engagement, and set up a framework [Nature Scot, ELC].

Energy Developers to fund support via ELC and community workers.



Spatial Plan - Pedestrian and Cycle Links

PRIORITY; A CYCLING AND WALKING STRATEGY WITH SAFE, DIRECT, APPROPRIATELY DESIGNED PATHS AND CYCLE ROUTES IN A CONNECTED NETWORK

A connected network of off-road or carefully engineered paths and cycle routes should connect the villages to each other, and to the coast, Cockburnspath, Dunbar and East Linton.

KEY

- Core Paths existing
- National Cycle Route
- Existing roads and tracks
- Aspirational routes - collated from the Survey Report. Thicker lines denote routes with many similar comments.
- Highlighted routes have strong support in principle, eg strong support for an off-road route between Spott and Dunbar.

