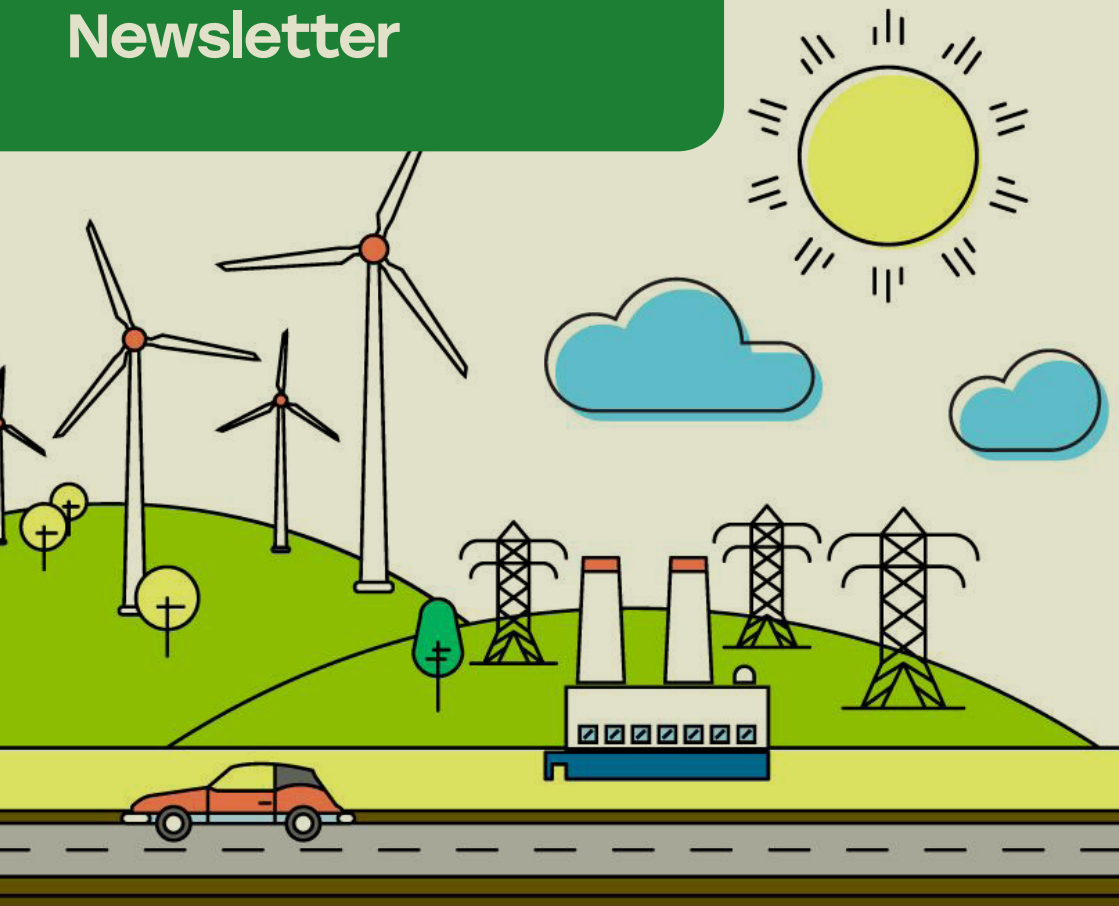


East Lammermuir Energy Projects Partnership Newsletter



June 2026

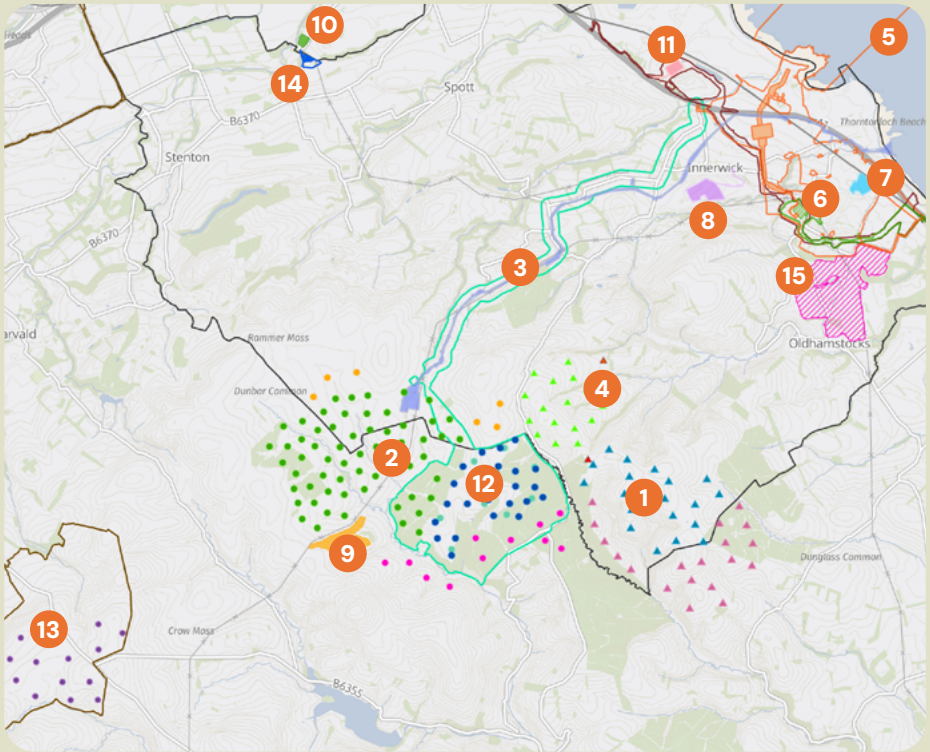
Welcome to the Energy Projects Partnership newsletter

The East Lammermuir Energy Projects Partnership is a collaboration between the Community Council, renewable energy developers, electricity transmission owners and East Lothian Council. We are working together to make sure the area is a better place as a result of the energy infrastructure developments.

Our newsletter is issued digitally every quarter, with the final edition for each year being posted to all households in the East Lammermuir Community Council area.

This edition contains the following information and updates:

- Energy Projects Partnership map3
- Energy Projects Partnership news.....4
- Community Traffic and Travel Forum.....5
- Biodiversity Community Liaison Group Update.....6
- Berwick Bank Wind Farm 7
- Eastern Green Link 1 – Prysmian (cables).....8
- Eastern Green Link 1 – Metlen (converter station)9
- Branxton Substation.....10
- Crystal Rig Wind Farm 11
- Taking Forward our Community Ambitions 12
- Warm Homes Project – Lothian Heat 13
- River Catchment Restoration Project 14
- Landscape Sensitivity Assessment..... 15



CONSTRUCTED

1. Aikengall wind farms
2. Crystal Rig wind farms
3. NnG Offshore Wind Farm cable route

CONSENTED

4. Aikengall BESS
5. Berwick Bank Wind Farm onshore works
6. Branxton Substation
7. Branxton BESS
8. Brax BESS
9. Crystal Rig Solar
10. Dunbar BESS
11. Eastern Green Link 1 onshore works

PLANNING

12. Crystal Rig I repower
13. Newlands Hill Wind Energy Hub
14. Pitcox BESS
15. Springfield Solar

Explore the map online here:



Energy Projects Partnership news

Our partnership work continues to be guided by our 5 key priorities:

- ➔ **Community-led development** – Find out the latest on P.12
- ➔ **Partnership working** –
 - » Our next public “Energy Developments” meeting is being planned for 23 September, save the date and keep an eye on our website, Facebook and email bulletins for details.
 - » We have established a partnership budget, with contributions from many of the energy projects. This covers the development of a “reporting portal” (P.5), our meeting costs and the newsletters.
- ➔ **Communication** – Our email bulletins are the best way to keep up to date with all the latest on planning applications, construction impacts and how the energy projects are leaving a lasting legacy of improvements for the area through community benefits. Sign up via www.elcc.scot/energy-developments/ or scan the QR code.
- ➔ **Sharing learning** – We are working on a “lessons learned log” to share learning between the energy projects. This will be a growing body of knowledge about how to be a good neighbour to the local community.
- ➔ **Construction impacts** – We have recently published a set of “frequently asked questions” about how planning conditions are monitored and enforced and how community members can report any issues. Planning conditions cover a range of topics, including construction traffic management, replanting and relandscaping. We hope this will offer reassurance to the local community. Read the FAQs here: www.elcc.scot/energy-developments.



Community Traffic and Travel Forum

Getting involved with this local group of residents is a great way to propose and influence positive solutions to minimise the construction impacts of energy projects on traffic and travel, whether by car, bike, horse riding or walking.

We'd like to share with you some updates about a few of the initiatives that have been shaped by our group:

- Reporting portal – this will be a new way of reporting local issues relating to the construction of the energy developments. There is a short form, where you can add details of an issue about any of the energy projects, drop a pin on a map and upload any photos, to help streamline follow up. It is expected to be available soon on the [East Lammermuir Developments website](#) and is mobile friendly.
- A1 signage – BEAR Scotland have secured funding for “Energy Projects” signage indicating the one way, “left on, left off”, route on the A1 between Cockburnspath and Spott roundabouts for construction traffic.
- Vehicle signage – Eastern Green Link 1 (EGL1) and Branxton Substation projects are rolling out cab signage across their sites, to assist with identification of vehicles when reporting any issues.

We hosted a Lorries in our Lanes public meeting on 18 May in Innerwick. Presentations from Crystal Rig, EGL1, Branxton Substation and Berwick Bank Offshore Wind Farm (onshore works) were followed by a Q&A. The slide deck can be found in the documents library of the [East Lammermuir Developments website](#).

We have also been advocating for access to be retained to the National Cycle Route 76 from Innerwick and for the access road to Crystal Rig Wind Farm to be maintained in good condition.

To find out more contact beth@elep.scot

Biodiversity Community Liaison Group Update

JASON ORMISTON, CHAIR

Since I last wrote an update for the newsletter, the East Lammermuir Biodiversity Community Liaison Group (BCLG) has continued to work for nature recovery in the area.

The BCLG, established following the launch of the Local Place Plan, is made up of several community members, most energy developers, the East Lothian Climate Hub (ELCAN), Sustaining Dunbar, East Lothian Council, and the Community Council. I would like to thank everyone who has contributed.

We started in 2024 and what is encouraging is the number of community and voluntary groups springing up in East Lothian tackling biodiversity loss and helping people in the region to live with the impacts of climate change. Groups like ELCAN leading on healthy hedgerows (among other things) and Balanced Horizons working from Muir to Forth are having an impact.

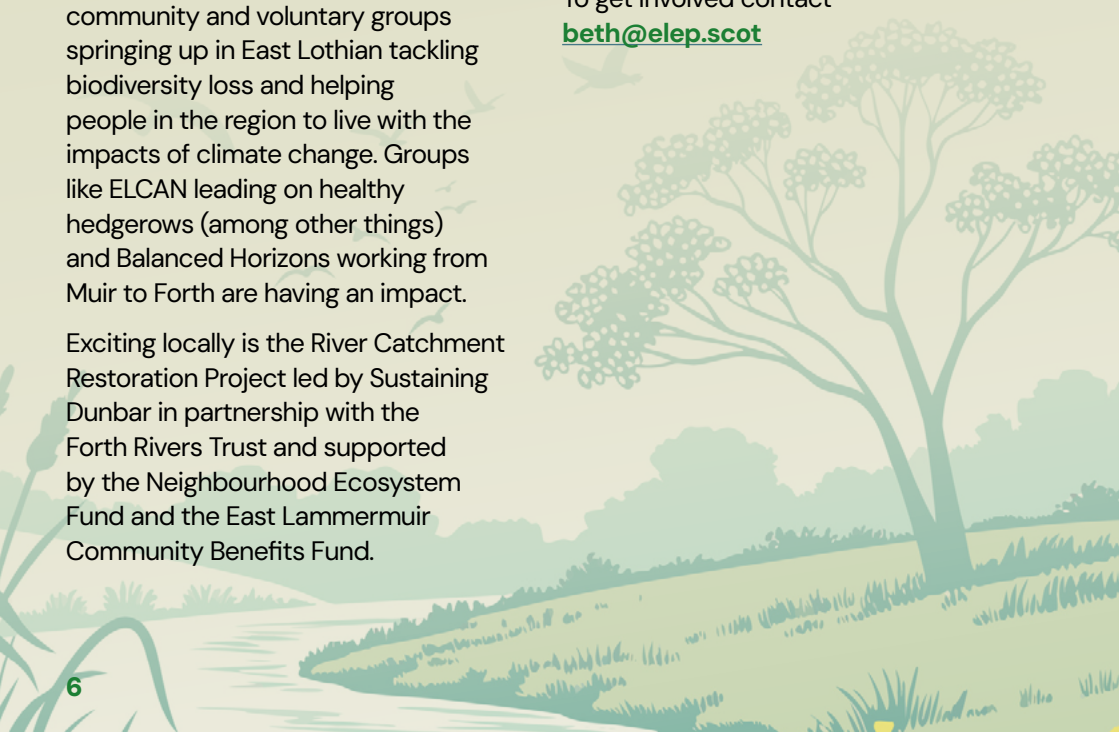
Exciting locally is the River Catchment Restoration Project led by Sustaining Dunbar in partnership with the Forth Rivers Trust and supported by the Neighbourhood Ecosystem Fund and the East Lammermuir Community Benefits Fund.

Working with landowners, it aims to help nature recover along burns that cross our area (see P.12 for a project update). Also inspiring is the work of Oldhamstocks for Nature which focuses on gardening for nature, village enhancement projects and efforts to support broader biodiversity and wildlife efforts in the area, particularly given the pressures from developments.

Through BCLG, energy developers see how the community values nature and is taking action to protect and restore it. In doing so we encourage them to bring forward plans that are sensitive to community aspirations.

To get involved contact

beth@elep.scot



Berwick Bank Wind Farm

Berwick Bank Wind Farm has made significant progress in recent months regarding plans for our onshore proposals. In March 2026, we received a positive decision from East Lothian Council regarding our application to install 275kV underground cables from our landfall site near Skateraw to our proposed substation site. We intend to begin preliminary construction works on site later this year.

In addition, we recently submitted our detailed planning proposals for Berwick Bank's onshore substation, which is essential to allow the project to take the energy generated at the wind farm site and connect it to the UK National Grid.

As part of our proposals, we are seeking views from local stakeholders on creating a space to be utilised by the local community. We would be keen to hear views on this and would encourage interested parties to reach out to berwickbank@sse.com for more information.

Later this year we will submit our final detailed planning application to East Lothian Council, this concerns plans to install 400kV underground cables from our substation site to the proposed Branxton substation, being developed by SP Energy Networks.

Contact: Gary.Donlin@sse.com



Eastern Green Link 1 - Prysmian

CABLING AND OFFSHORE WORKS

Prysmian (our cable contractor) is moving into a significant phase of the Eastern Green Link 1 (EGL1) project this summer; with a mix of offshore, coastal and onshore works. Onshore, the region can expect around 550 vehicle movements per month or 24 per working day.

OFFSHORE INVESTIGATIONS

Unexploded Ordnance investigation took place in May to confirm whether potential seabed anomalies are unexploded ordnance or areas of possible archaeological interest and to ensure the area is safe before any installation or construction activity proceeds. Fisheries remain informed throughout via Prysmian's Fisheries Liaison Officer.

COASTAL WORKS NEAR THORNTONLOCH BEACH

Starting 6 June through 29 July, works relating to casing installation and fusion welding will commence near the Torness shoreline. To ensure the project remains on schedule, these works will operate 24 hours a day, 7 days a week. Dates are subject to change.

- ➔ Daytime: Focus on casing installation along the cable route.
- ➔ Night time: Welding activities, including work under the railway crossing.

Prysmian is committed to minimising disruption. Noise levels will remain below 96 dB(A), comparable to a lawnmower, and silenced generators will be utilised at night. To ensure safety and visibility, 20 light towers will be active; however, these will be directed inward to prevent glare on the railway and highway.

SKATERAW PATH CLOSURE

The path on the north side of the A1 near Skateraw closed on Thursday 4 June. The path will remain closed until further notice.

Safety remains our priority. Works are taking place throughout the week and at weekends to progress the project. Due to the heavy machinery and intensive nature of the upcoming work programme, it is not possible to reopen the path to the public at weekends for health and safety reasons.

Because the works are complex and subject to change, due to factors outside of our control such as the weather, it is not possible to provide a date as to when the path will reopen at this time. We remain committed to temporarily reopening the path throughout the two-year period whenever it is safe to do so. We apologise for the inconvenience and appreciate your understanding during this period of disruption.

An update will be shared in the Energy Projects News Bulletin each week. Contact: project.communications@spenergynetworks.co.uk

Eastern Green Link 1 - Metlen (converter station)

Good progress is being made at the EGL1 converter station site at Oxwellmains, where major construction activity is now well underway.

Earthworks began last year to level the site and improve ground conditions. By March, this had advanced sufficiently to allow piling works to begin. This process involves driving long steel piles deep into the ground to create a stable foundation for the converter station structures.

As piling can be noisy, these activities have been limited to weekdays. Noise levels have remained well within permitted limits, and our environmental team continues to monitor operations closely to minimise any impact on the local area.

Alongside piling, main civil engineering works are progressing. Early stages include excavating around the installed piles and trimming them to the required height.

This will be followed by construction of reinforced concrete foundations for the main buildings, as well as the installation of drainage, roads and pavements.

Work on site infrastructure is also advancing. Two retaining walls, with a combined length of approximately 300 metres, have now been completed along the southern and western boundaries. Construction of a third retaining wall at the northern edge of the site is ongoing.

To manage traffic safely, construction vehicles are not permitted to make right turns across the A1 when entering or leaving the site. Where necessary, drivers are required to divert to the Spott or Cockburnspath roundabouts.

Meanwhile, a planning application has been approved by East Lothian Council for a temporary park-and-ride facility for construction workers. The site is located on vacant development land within Dunbar Business Park.

Contact: project.communications@spenergynetworks.co.uk

Photo: courtesy of Lomond Drones



Branxton Substation

Work is progressing with the SP Energy Networks Branxton Substation project, which will enable crucial connections to strengthen the electricity network and support future energy needs.

Initial works began in January 2026 on the new A1 slip road, C120 improvements and changes to the existing slip road, with works continuing to June 2026. Following feedback from Bilsdean and Birnieknowes residents, improvements have been implemented, including revised traffic signal positioning and a 20mph Temporary Traffic Regulation Order. We will continue to review measures to manage works and traffic management through this period.

To complete the new A1 slip road the temporary traffic barrier must be removed to tie in the new road. This requires night shift working from 16th to 18 June. Works will be completed as quickly as possible, and steps will be taken to minimise noise.

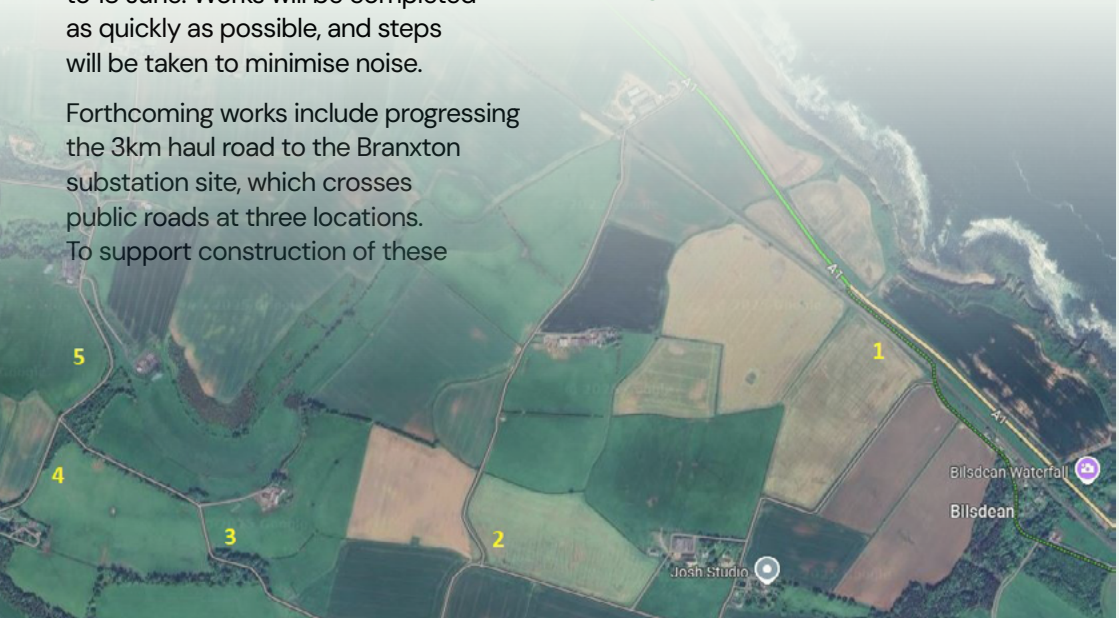
Forthcoming works include progressing the 3km haul road to the Branxton substation site, which crosses public roads at three locations. To support construction of these

junctions (including signage, road widening and resurfacing), road closures have been agreed with East Lothian Council as follows:

- ➔ Location 2: Lawfield Road – 11 June to 5 July
- ➔ Location 3: ZU215 – 4 to 27 August
- ➔ Location 4: C121 – 19th August to 13 September
- ➔ C121 road widening requires a closure at Location 5: 14 September to 12 October

As construction on the project continues, we will continue to carefully phase activities to minimise disruption and work closely with the community – ensuring residents are kept informed.

If you have any questions, please contact us via project.communications@spenergynetworks.co.uk



Crystal Rig IV Wind Farm

With the construction phase of Crystal Rig IV (CRIV) nearing completion, and operational status expected by the end of May, we are keen to celebrate what the project has delivered for local communities, the economy and the environment.

CRIV will provide around £241,000 every year in community benefit funding to local community councils in East Lothian and the Scottish Borders, equating to over £8 million across the lifetime of the wind farm. Funding from operational Crystal Rig wind farms is already helping to support local priorities through improvements to village halls, schools and community facilities. Importantly, funding is guided by you, the local communities, ensuring it reflects local needs and ambitions.

During construction, CRIV generated over £5 million of local spend across East Lothian and the wider South-East Scotland region, supporting jobs and local businesses. We have worked closely with contractors to maximise the use of local suppliers and skills, thereby strengthening the regional supply chain. Fred. Olsen Renewables are conducting a supply chain analysis of the CRIV project and will release the full report when completed.

The project has been delivered with a strong focus on environmental responsibility. This includes careful management of forestry works and the implementation of a compensatory planting plan.

We also recognise the impact of construction traffic on local roads and would like to thank residents for their patience. Robust traffic management measures were successfully implemented to reduce disruption, with specific measures introduced to help manage speeds and improve safety throughout the construction period.

Crystal Rig IV builds on our long-term presence in the area. We remain committed to working openly with ELCC and residents to ensure the benefits of renewable energy are shared locally, both now and for years to come.

If you wish to discuss any aspects of the project, please do get in touch with me: cris.thacker@fredolsen.com 07353 962758

Cris Thacker, Communications Manager

Fred. Olsen Renewables



Taking Forward our Community Ambitions

Our goal as a partnership is for East Lammermuir to be a better place as a result of the energy developments.

Building on the Local Place Plan, we now have a set of workshop reports exploring how to take forward our 4 community priorities. These are themed around ambitions for energy-efficient, warm homes; active travel networks; improved public or community transport; and thriving biodiversity.

The reports offer recommendations to guide the way as we seek to implement these ambitions, through community benefits and other means. We are grateful for funding from SP Energy Networks to enable the workshops and reports.

Check out the reports on the [ELCC news pages](#)

To coordinate this work, we are currently recruiting for an East Lammermuir Community Development Officer.

The role will be hosted by East Lothian Climate Hub, who supported us wonderfully throughout the workshops. We are grateful for funding from Neart na Gaoithe (NnG) Community Fund to enable this post to get started and will announce the funding for subsequent years soon. NnG is a joint venture between EDF power solutions UK and ESB. The deadline for applying is 15 June, find out more on the [East Lothian Climate Hub](#) website.

There have already been exciting developments including the recruitment of a Warm Homes Project Manager by Lothian Heat (also funded for the first year by the NnG Community Fund) and the continuation of the River Catchment Restoration Project by Sustaining Dunbar, both focussed on East Lammermuir. Find out more about these two initiatives on the next 2 pages.

Warm Homes Project

- Lothian Heat

Hello! My name is Ellen Abbi, and I am the new Warm Homes Project Manager for the East Lammermuir Community Council area.

Last winter, I enjoyed meeting a number of East Lammermuir residents whilst carrying out thermal imaging as part of the Community Heat Team alongside Sustaining Dunbar. I have a background in historic building conservation and am a fellow East Lothian resident.

My new role is with Lothian Heat, a community interest company, which has been appointed by East Lammermuir Community Council to deliver the community's stated ambition for warmer and more energy efficient homes. Lothian Heat's aim is to ensure that "no heat is wasted and no home is cold".

East Lammermuir will receive over £4 million in community benefits over the next 5 years. A proportion will be allocated to help homes improve energy efficiency and move away from reliance on fossil fuels, and my role will be to help engage with East Lammermuir's communities to make this a reality. More information on what this means for everyone will be available later this month.

I look forward to meeting many more of East Lammermuir's residents in the coming weeks and months to help achieve these aims, so please stay tuned.

Updates will be shared through East Lammermuir Community Council and Energy Projects Partnership channels.

Contact: ellen.abbi@lothianheat.org



River Catchment Restoration Project

SUSTAINING DUNBAR

A landscape-scale habitat restoration **pilot project** was launched in 2025, with the aim of exploring how landowners and communities can work together to restore biodiversity, jointly funded by East Lammermuir Community Benefits and the Neighbourhood Ecosystem Fund.

We have now completed preliminary survey work on each of the coastal burns in East Lammermuir. This has identified many of the main pressures and challenges currently facing these watercourses, such as historic straightening that has disconnected burns from their floodplain, old weirs and other barriers to fish migration, sources of diffuse pollution, loss of riparian habitat, non-native invasive species and so on.

It has also highlighted a multitude of potential opportunities for interventions that start to restore natural river function, to connect currently fragmented habitats and restore riparian woodland and wetlands.

The next step is going to be to engage further with landowners, to better understand their perspectives and aspirations and find opportunities for collaboration. In partnership with Forth Rivers Trust we will

then work up detailed plans for restoration and enhancement, building a portfolio of credible and fundable projects that fit together coherently across the landscape.

We have just appointed a paid (part-time) 'restoration development officer' to take a lead in coordinating this next phase of the project. The initial focus will be on the Spott Burn and the Dry Burn, expanding across the whole of East Lammermuir and the Biel Water catchment as resources permit.

Meanwhile, Wilder Outdoor Education's work with Stenton and Innerwick Primary Schools will continue through to the end of this term and we are about to launch a multi-disciplinary programme of creative workshops, **'FLOW'**, as part of an ongoing process of seeking a shared understanding of how we can live in harmony with nature. These workshops will lead up to an exhibition in John Muir's Birthplace in July.



Photo: Spott Burn at Brock Wood in Spring

Landscape Sensitivity Assessment

We mentioned in the March newsletter that East Lothian Council (ELC) appointed consultants ([LUC](#)) to undertake a Landscape Sensitivity Assessment (LSA). This LSA provides judgements on the sensitivity of the landscape within the East Lothian Council area to types of renewable energy developments.

The findings of this assessment will help the Council to guide renewable energy developments to less sensitive parts of the landscape and inform its next Local Development Plan. The draft LSA will be on the [ELC Consultation Hub](#) for a short period for comments, likely in early June.



Fred. Olsen Renewables

